



MERCEDES FBS4 MANAGER

User manual
Version 1.4



Important notes

The Abrites software and hardware products are developed, designed and manufactured by Abrites Ltd. During the production process we comply to all safety and quality regulations and standards, aiming at highest production quality. The Abrites hardware and software products are designed to build a coherent ecosystem, which effectively solves a wide range of vehicle-related tasks, such as:

- Diagnostic scanning;
- Key programming;
- Module replacement,
- ECU programming;
- Configuration and coding.

All software and hardware products by Abrites Ltd. are copyrighted. Permission is granted to copy Abrites software files for your own back-up purposes only. Should you wish to copy this manual or parts of it, you are granted permission only in case it is used with Abrites products, has "Abrites Ltd." written on all copies, and is used for actions that comply to respective local law and regulations.

Warranty

You, as a purchaser of Abrites hardware products, are entitled of a two-year warranty. If the hardware product you have purchased has been properly connected, and used according to its respective instructions, it should function correctly. In case the product does not function as expected, you are able to claim warranty within the stated terms. Abrites Ltd. is entitled to require evidence of the defect or malfunction, upon which the decision to repair or substitute the product shall be made.

There are certain conditions, upon which the warranty cannot be applied. The warranty shall not apply to damages and defects caused by natural disaster, misuse, improper use, unusual use, negligence, failure to observe the instructions for use issued by Abrites, modifications of the device, repair works performed by unauthorized persons. For example, when the damage of the hardware has occurred due to incompatible electricity supply, mechanical or water damage, as well as fire, flood or thunder storm, the warranty does not apply.

Each warranty claim is inspected individually by our team and the decision is based upon thorough case consideration.

Read the full hardware warranty terms on our [website](#).

Copyright information

Copyright:

All material herein is Copyrighted © 2005-2023 Abrites, Ltd.
Abrites software, hardware, and firmware are also copyrighted
Users are given permission to copy any part of this manual provided that the copy is used with Abrites products and the “Copyright © Abrites, Ltd.” statement remains on all copies.
“Abrites” is used in this manual as a synonym with “Abrites, Ltd.” and all it’s affiliates
The “Abrites” logo is a registered trademark of Abrites, Ltd.

Notices:

The information contained in this document is subject to change without prior notice. Abrites shall not be held liable for technical/editorial errors, or omissions herein.
Warranties for Abrites products and services are set forth in the express written warranty statements accompanying the product. Nothing herein should be construed as constituting any additional warranty.
Abrites assumes no responsibility for any damage resulting from the use, misuse, or negligent use of the hardware or any software application.

Safety information

The Abrites products are to be used by trained and experienced users in diagnostics and reprogramming of vehicles and equipment. The user is assumed to have a good understanding of vehicle electronic systems, as well as potential hazards while working around vehicles. There are numerous safety situations that cannot be foreseen, thus we recommend that the user read and follow all safety messages in the available manual, on all equipment they use, including vehicle manuals, as well as internal shop documents and operating procedures.

Some important points:

Block all wheels of the vehicle when testing. Be cautious when working around electricity.

Do not ignore the risk of shock from vehicle and building-level voltages.

Do not smoke, or allow sparks/flame near any part of the vehicle fuel system or batteries.

Always work in an adequately ventilated area, vehicle exhaust fumes should be directed towards the exit of the shop.

Do not use this product where fuel, fuel vapours, or other combustibles could ignite.

In case any technical difficulties occur, please contact the

Abrites Support Team by email at support@abrites.com.

Table of contents

1. Introduction

2. General Information

2.1 Scope of the manual

System requirements:

2.2 Getting Started

3. FBS4 Manager

4. ECU Replacement

4.1 Engine Control Unit (ECU) replacement procedure

4.2 Connections:

4.3 Virginization procedure:

4.3.1 Virginization in the vehicle by OBDII:

4.3.2 Virginization on bench:

4.4 Read FBS4 Personalization Data

4.4.1 Read FBS4 Personalization Data by OBDII

Reading personalization data by OBDII is available for the following units:

4.4.2 Read FBS4 Personalization Data on bench

4.5. ECU BENCH DIAGRAMS:

4.6 MRD1/MRG1 ECUs - CB030 - Mercedes-Benz MD/MG ECU connection cable

4.7 Requirements

4.8 VIN Exchange

5. TCU Replacement

5.1 Transmission Control Unit (TCU) replacement procedure

5.2 Connections

5.3 VGSNAG3 9G-tronic

Table of contents

- 5.4 VGS2-DCT Mercedes VGSNAG2-FDCT:
- 5.5 VGS4NAG2 7-G Tronic
- 5.6 Requirements
- 6. ESL (ELV) Repair**
 - 6.1 Connections
 - 6.2 ESL (ELV) diagrams/pinouts for connection on bench.
 - 6.3 Procedure Execution
- 7. DSM replacement**
 - 7.1 Direct Select Module (DSM) replacement procedure
 - 7.2 Connections
 - 7.3 Requirements
- 8 More functionalities of the FBS4 Manger**

List of revisions

Date	Chapter	Description	Revision
23.12.2022	ALL	Document created.	1.0
28.03.2023	4 & 5	4 - updated; 5 - created	1.1
21.09.2023	ALL	ECU, TCU, DSM, Quick Start.	1.2
10.11.2023	4.2.1	CB030 information	1.3
20.02.2024	4 & 5	FBS4 unit replacement procedures (MN034)	1.4

1. Introduction

Congratulations on choosing our wonderful product!

The “Mercedes FBS4 Manager” is an Online server based Abrites software for Mercedes FBS4 vehicles

In order to operate, the software requires you to have an AVDI interface, a Windows based PC with a minimum of 1024MB RAM, 64GB of free hard drive space and at least Windows 7 64bit Service Pack 1 or later version to operate. For optimal operation, it is always recommended to have the latest software version installed, active AMS, and a stable Internet connection.

With the help of this software you can perform DAS module replacement Mercedes FBS4 vehicles.

For proper operation of your diagnostic software you will need a corresponding interface for connection between your PC and vehicle named “AVDI”. “AVDI” stands for “Abrites Vehicle Diagnostic Interface.” It is produced by Abrites Ltd. and intended to act as an interface between the PC and the electronic control units.

Please check the “license viewer” installed on your computer for your unique interface ID number.

The software is in constant development and its functionality is ever growing. The intentions for the Abrites Software are to be used by automotive specialists, but it is simultaneously designed in such a way that is accessible to enthusiasts as well.

AVDI should be used with ABRITES software produced by Abrites Ltd.

ABRITES is a trade mark of Abrites Ltd

2. General Information

2.1 Scope of the manual

This document describes the usage of Abrites Mercedes FBS4 Manager. The document is applicable for the latest software version. In this manual we suppose that the software for your AVDI interface is already installed. Please refer the "AVDI Common User's Manual" in case it is not.

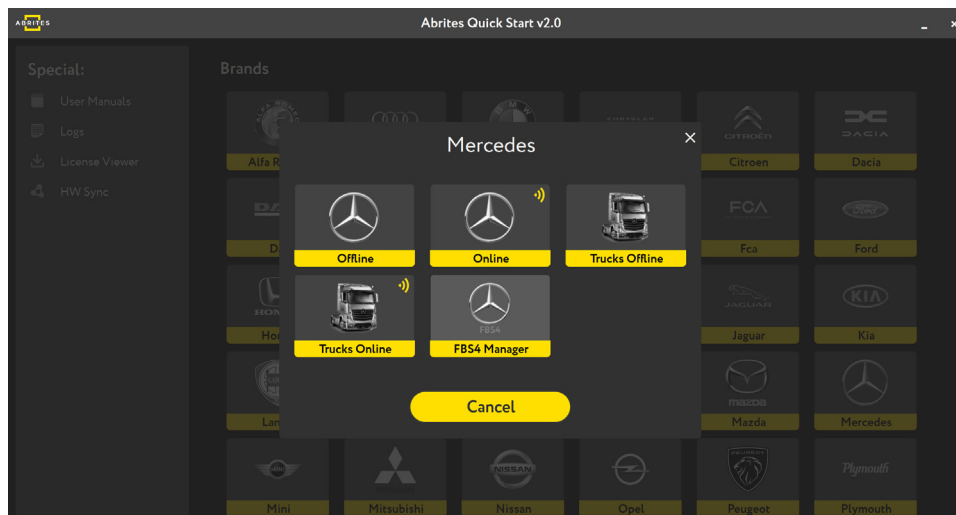
System requirements:

Minimum system requirements – Windows 7 SP1 + 2GB RAM
(Recommended 4GB) and manually updated COM Port driver.

2.2 Getting Started

You can start Abrites Mercedes FBS4 Manager by starting the Abrites Quick Start application and selecting Mercedes icon first.

When the Abrites Diagnostics for Mercedes application is started the main screen of the application will appear where you can select the Mercedes FBS4 Manager.



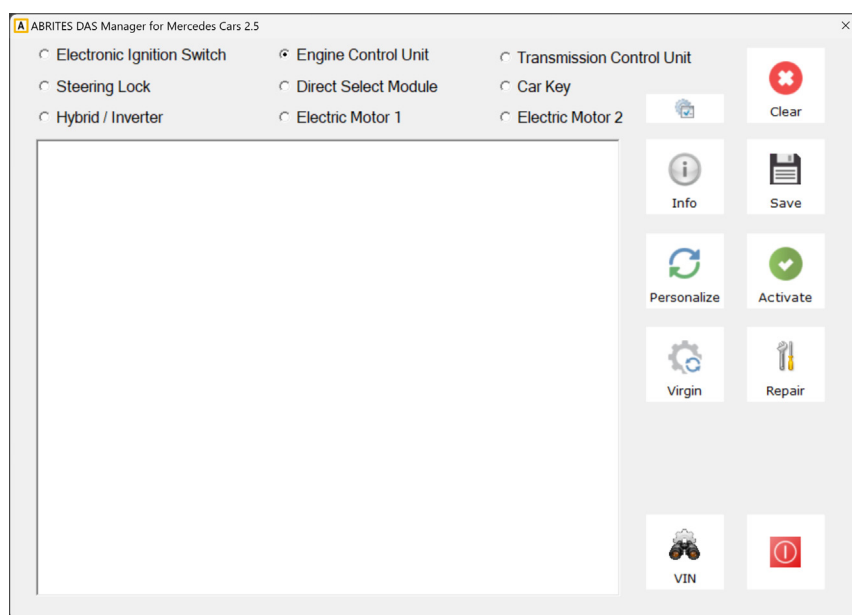
3. FBS4 Manager

FBS4 Manager is the software that lets you work with DAS modules from the FBS4 platforms. The software is constantly growing and its functionalities will be expanding with future updates. The main screen of the software gives you the unit selection and shows the buttons with the available special functions. You can work with the following modules:

- Electronic Ignition Switch (EVS/EIS)
- Engine Control Unit (ECU)
- Transmission Control Unit (TCU)
- Electronic Steering Lock (ESL)
- Direct Select Module (DSM/DSM222)
- Car Key
- 48V started generators from family INV20EM01 (hybrid vehicles)
- Electric motor 1 & 2

Functionalities:

- **Info** button will provide information about the type of unit and its status
- **Save** button will start reading the FBS data and will let you save it to a file
- **Personalize** button lets you write the FBS data, which you have already saved
- **Virgin** button will set the unit to virgin state. This means the unit will be ready for personalization
- **VIN** button will let you write the VIN to the module
- **Repair** button will start a procedure for Electronic Steering Lock repair

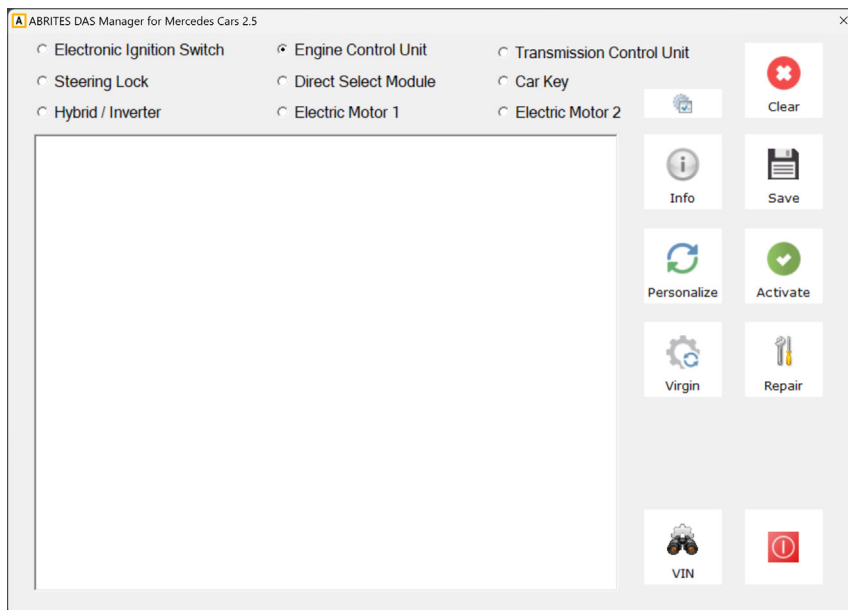


4. ECU Replacement

Engine Control Unit section of the FBS4 Manager has the following functionalities:

- Set FBS4 Electronic Control Modules to virgin state
- Read the personalization data from a FBS4 Control Modules and save it to a file
- Program personalization data from a previously saved file to a FBS4 Control Module
- FBS4 Control Modules Activation
- Display FBS4 status of Control Modules including assembled in hybrid and electric vehicles
- VIN programming

All that lets you do a complete ECU exchange so that the vehicle can start and run properly.



4.1 Engine Control Unit (ECU) replacement procedure

Engine Control Unit replacement procedure has the following specific steps:

- Reading FBS data
- Virginization
- Personalization

Abrites FBS4 Manager is able to personalize a virgin or new unit in ALL cases.

Reading FBS data and Virginization procedures have some specifics, described further in this document.

There are 2 general scenarios:

1. Replace the unit when the original unit is available and you can read the FBS4 personalization data
2. Replace the ECU when **no FBS personalization data is available**

Here is the procedure from **scenario 1** explained briefly, each step will be expanded with more details later in a dedicated section:

1. Read the FBS personalization data from the original ECU, using OBDII connection in the vehicle, and save the file for later use!
2. Install a new or virgin unit in the vehicle.
3. Donor unit can now be virginized if not in virgin state.
4. Personalize with the already saved FBS data from the original unit - here you will need direct CAN Connection. (Blue CAN Wires)
5. The vehicle should start normally, there is no need to "Activate" the unit, as it gets activated automatically after 100 ignition cycles, while it operates normally in the meantime.

N.B. ALL virgin or new modules can be personalized with no restrictions!

Here is the procedure from **scenario 2** briefly explained, each step will be expanded with more details later in a dedicated section:

1. Install a new or virgin unit in the vehicle.
2. Donor unit can now be virginized if not in virgin state or new.
3. Personalize the unit by OBDII

Supported units when NO PREVIOUSLY PERSONALIZATION DATA IS AVAILABLE:

- MED177
- MED1775
- MED40
- CR40
- CR41
- CR42
- CR43
- CR60LS
- CR61

ECU replacement procedure **scenario 1** in details:

Step 1: You need to be able to read the original unit's data. The procedure is executed in the vehicle by OBDII in most cases, however, certain units require **specific connections** described later in this user manual. Original ECU needs to be in place > open the ECU selection of the FBS4 manager, and press "Info" to establish connection to the unit, once the unit is read, press the "Save" button. This would read the required FBS4 personalization data from the ECU and let you save it to a file located on your computer.

Step 2: Install the replacement ECU in the vehicle.

If you are using a new or a virgin unit you can proceed to Step 4

Step 3: If you are working with a used donor unit, you will have to set it to virgin state.

To do that, click the "Info" button to read the unit and check its' unit status. Press the "Virgin" button to set the unit to virgin state. Procedure is executed via OBDII in most of the cases, but there are units that are not covered via OBDII, and you would have to go and do it on bench, there is dedicated procedure with all details explained.

Step 4: You would now have to press "Personalize" button, which would ask you to upload the file, previously saved from the original ECU. Procedure is executed via OBDII and direct CAN Connection (Blue CAN wires) Once connection is established, a new screen will come up, make sure you select "standard" option!

Once done, you can press the "Info" button and check if the unit is personalized.

The vehicle should start normally, there is no need to "Activate" the unit, as it gets activated automatically after 100 ignition cycles, while it operates normally in the meantime.

Step 5: Last step to complete the procedure is to write the VIN of the vehicle into the unit by pressing the "VIN" button, and a pop-up window will appear where you need to write the correct VIN to the unit

ECU replacement procedure **scenario 2** in details:

Step 1: Install the replacement ECU in the vehicle.

If you are using a new or a virgin unit you can proceed to Step 3

Step 2: If you are working with a used donor unit, you will have to set it to virgin state.

To do that, click the “Info” button to read the unit and check its’ unit status. Press the “Virgin” button to set the unit to virgin state. Procedure is executed via OBDII in most of the cases, but there are units that are not covered via OBDII, and you would have to go and do it on bench, there is dedicated procedure with all details explained.

Step 3: You would now have to press “Personalize” button, which would ask you to upload the file, previously saved from the original ECU. Here you have to **“cancel” the upload** as the original unit is missing or not available for reading. Procedure is executed via OBDII. Once connection is established, a new screen will come up, make sure you select “standard” option!

Once done, you can press the “Info” button and check if the unit is personalized.

The vehicle should start normally, there is no need to “Activate” the unit, as it gets activated automatically after 100 ignition cycles, while it operates normally in the meantime.

Step 4:Last step to complete the procedure is to write the VIN of the vehicle into the unit by pressing the “VIN” button, and a pop-up window will appear where you need to write the correct VIN to the unit

MN034 license required!

Supported units when NO PREVIOUSLY PERSONALIZATION DATA IS AVAILABLE:

- MED177
- MED1775
- MED40
- CR40
- CR41
- CR42
- CR43
- CR60LS
- CR61

4.2 Connections:

We are able to work with the following connections in general:

In the vehicle:

- AVDI + CB106 OBDII Cable
- AVDI + CB106 OBDII Cable + CB012 - Direct CAN-BUS Connection Cable Set (needle connectors to internal CAN)
- AVDI + [ZN051 DS-Box](#) + CB106 OBDII Cable (+Can connectors to 3-11 of the DS Box and needle connectors to internal CAN) does not work for vehicles with EZS of the w213/W907/W177 types - in this case personalization is executed with the use of CB012 for CAN connection

Bench Connections:

- AVDI + [ZN051 DS Box](#) + CB401 (from the ZN051 set)
- AVDI + [ZN051 DS Box](#) + CB403 DS-Box Extended Cable Set for direct connection with various Automotive/Truck modules on Bench work
- AVDI + [ZN051 DS Box](#) + [CB030](#) Mercedes-Benz MD1/MG1 ECU connection cable for FBS4 Manager

CRR1 (SID307) and CRR1+ (SID310) – Done completely by OBDII

MRG1 and MRD1 bench connection - using [CB030](#) (with or without [ZN051 DS Box](#)) - details in the [CB030](#) dedicated section 4.3 of this user manual.

CRR2 (MD1CS006) - bench connection using DS Box and CB401

MED41 (MED17.7.7) - bench connection using DS Box and CB401

VGS4NAG2 - ABProg programmer!

DSM - ABProg programmer!

4.3 Virginization procedure:

If you have a donor unit that is not new, you need to make it virgin.

You can do that as follows:

- In the vehicle after step 2 of the replacement procedure
- On bench, at any point before installing the unit in the vehicle for personalization purpose.

4.3.1 Virginization in the vehicle by OBDII:

1. Install the donor (personalized) unit and click the “Info” button to read the unit and check its’ unit status.
2. Press the “Virgin” button to set the unit to virgin state.
3. Procedure is executed via OBDII in most of the cases, but there are units that are not covered via OBDII, and you would have to go and do it on bench.

Supported units:

MED17, EDC17, SID310, Delphi-CRD3 ECUs, (CR40, CR41, CR42, CR43, CR6, CR60, CR61, MED40, MED41, MED177, MED1773, MED1775, CRR1, CRR1+, CRD3, CRD3S2).

4.3.2 Virginization on bench:

You can set a unit into virgin state, using bench connection, and get it ready for personalization.

For that, you can use the following set-up options:

[ZN074](#) set recommended to provide power supply to the [ZN051 DS Box](#)

List of modules that **require more specific** bench connection for virginization

- MED41, MED41AMG - AVDI + [ZN051 DS Box](#) + CB403 DS Box Extended Cable Set - in specific cases
- MRD1, MRD1NFZ (produced up to 2021) AVDI + [ZN051 DS Box](#) + [CB030](#) Mercedes-Benz MD1/MG1 ECU connection cable for FBS4 Manager (EP003 license is also required)
- MRG1, MRG1AMG, MRG1AMGR4 (produced up to 2021) - AVDI + [ZN051 DS Box](#) + [CB030](#) Mercedes-Benz MD1/MG1 ECU connection cable for FBS4 Manager (EP003 license is also required) CRR2 MD1CS006 (produced up to 2021) - EP003 license is also required
- For the rest of the modules you can use AVDI + [ZN051 DS Box](#) + CB401

Connection diagrams for each module are available later in this user manual.

Once you have made the proper connections and have powered up the whole set-up, execute the following steps:

1. Open the Mercedes FBS4 Manager software
 2. Select the ECU option in the software
 3. Press the “Info” button to establish connection and read the unit’s information
 4. Press the “Save” button to read the FBS4 personalization data and save it to a file for a back-up
 5. Press the “Virgin” button to set the unit to a virgin state – so that is ready for personalization
- NB! Please press the “Info” button again to make sure the unit is properly set to “Virgin state”

4.4 Read FBS4 Personalization Data

Personalization data can be read in the vehicle or on bench.

4.4.1 Read FBS4 Personalization Data by OBDII

Reading personalization data by OBDII is available for the following units:

- MED17
- EDC17
- SID310
- Delphi- CRD3 ECUs, (CR40, CR41, CR42, CR43, CR6, CR60, CR61, MED40, MED41, MED177, MED1773, MED1775, CRR1, CRR1+, CRD3, CRD3S2).
- All MRD1, MRG1, MRG2, CRR2, EMS71 (no restrictions in production year!)

4.4.2 Read FBS4 Personalization Data on bench

You can find the connection diagrams for bench reading in the next section.

4.5. ECU BENCH DIAGRAMS:

CB403 PIN OUT:

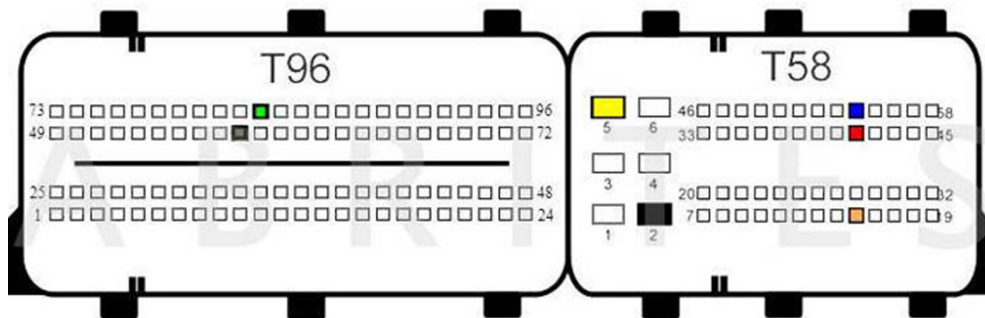
- 1 - pink - "IGN"
- 2 - yellow and yellow/white - "B+" (on both wires)
- 3 - red/blue - "K-LINE 1"
- 4 - purple - "BOOT 2"
- 5 - white - "BOOT 1"
- 6 - green - "T2"
- 7 - brown - "T1"
- 8 - red - "CAN H"
- 9 - green/white - "T3"
- 10 - green/brown - "T4"
- 11 - black - "GND"
- 12 - gray - "GND"
- 13 - yellow/brown - "B+ PERMANENT"
- 14 - blue - "CAN L"
- 15 - grey/pink - "K-LINE 7"

CB401 DB15 cable Legend:

- Power - Yellow (B+)
- IGN - Orange (IGN)
- GND - Black (GND)
- CAN HI - Red (CAN6)
- CAN LOW - Blue (CAN14)
- T1 - Brown (T1)
- T2 - Green (T2)
- Boot - White

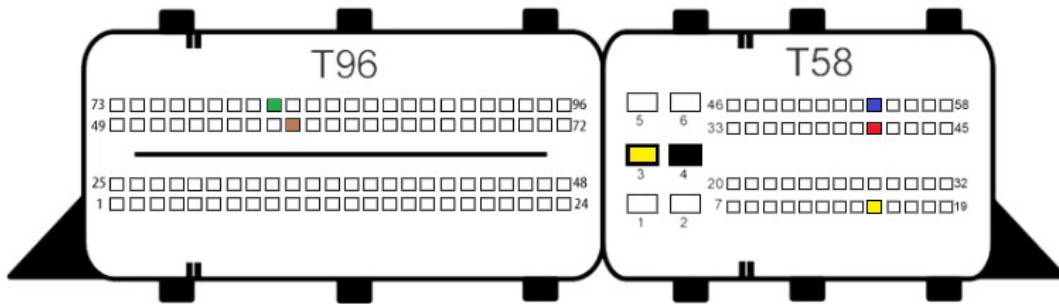
Connection diagrams on the next page
Colors are dedicated to the CB401 cable.

MED40 BOSCH
 MED17.7.1 TC1797 V1
 MED17.7.3 TC1797
 MED17.7.3.1 TC1797 MED177
 MED17.7.5 TC1793 MED177
 MED177AMG
 MED177V6LA



T96 PIN 83 – PWM
 T96 PIN 58 – PWM
 T58 PIN 2 – GND-
 T58 PIN 5 – 12V+
 T58 PIN 15 – IGN
 T58 PIN 41 – CAN-H
 T58 PIN 54 – CAN-L

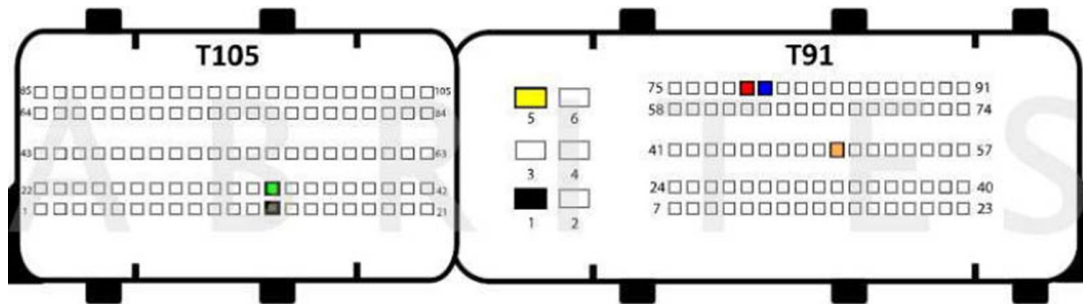
MED17.7.1 TC1797 V2
 MED17.7.2 TC1797
 MED40AMG



T96 PIN 81 – PWM
 T96 PIN 58 – PWM

T58 PIN 3 – 12V+ GND-
 T58 PIN 4 – GND-
 T58 PIN 15 – IGN
 T58 PIN 41 – CAN-H
 T58 PIN 54 – CAN-L

MED17.7.8 TC1797 MED177



T105 PIN 13 - PWM

T105 PIN 34 - PWM

T91 PIN 1 - GND

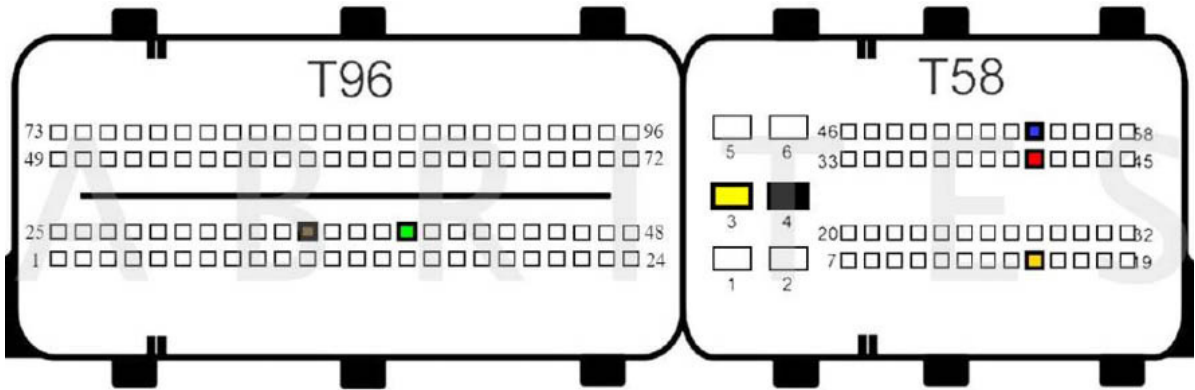
T91 PIN 5 - B+

T91 PIN 50 - IGN

T91 PIN 79 - CAN H

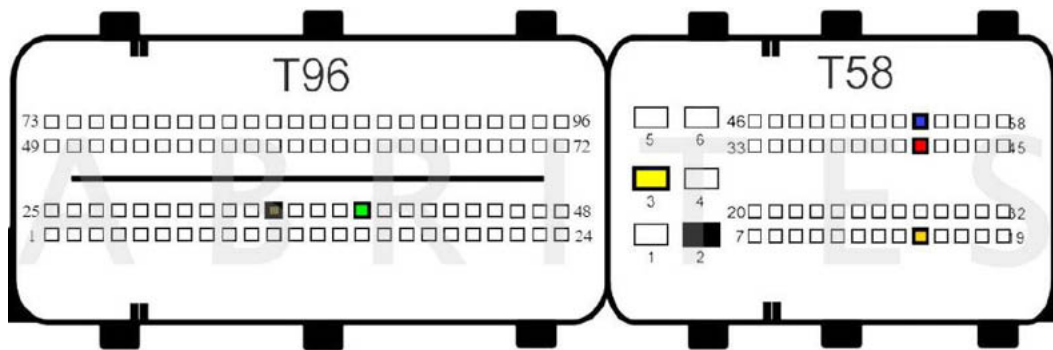
T91 PIN 80 - CAN L

CR61 (EDC17CP57) (BOSCH EDC17CP57 TC1793)



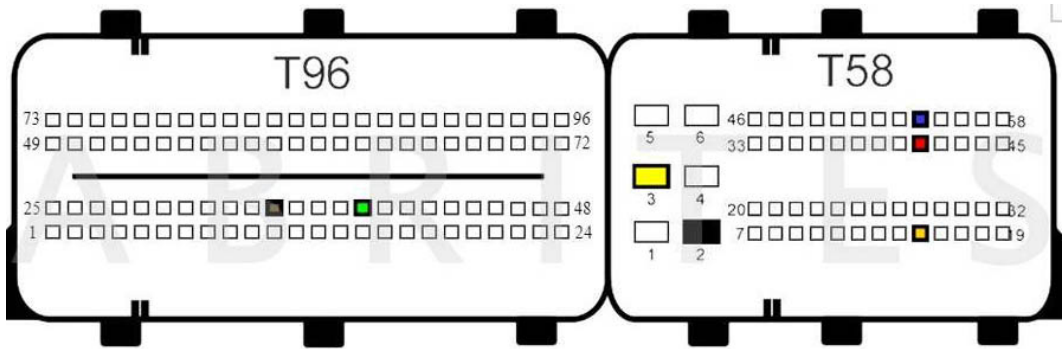
- T96 PIN 35 - PWM
- T96 PIN 39 - PWM
- T58 PIN 3 - 12V+
- T58 PIN 2 - GND-
- T58 PIN 15 - IGN
- T58 PIN 41 - CAN H
- T58 PIN 54 - CAN L

CR42 (EDC17CP46) BOSCH EDC17CP46 TC1797



- T96 PIN 39 - PWM
- T96 PIN 35 - PWM
- T58 PIN 3 - 12V+
- T58 PIN 2 - GND-
- T58 PIN 15 - IGN
- T58 PIN 41 - CAN H
- T58 PIN 54 - CAN L

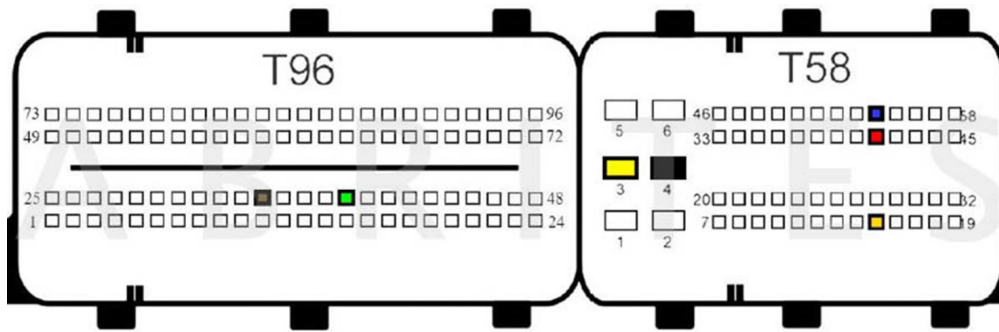
CR6 (EDC17CP10) BOSCH EDC17CP10 TC1796



T96 PIN 39 - PWM
 T96 PIN 35 - PWM

T58 PIN 3 - 12V+
 T58 PIN 2 - GND-
 T58 PIN 15 - IGN
 T58 PIN 41 - CAN H
 T58 PIN 54 - CAN L

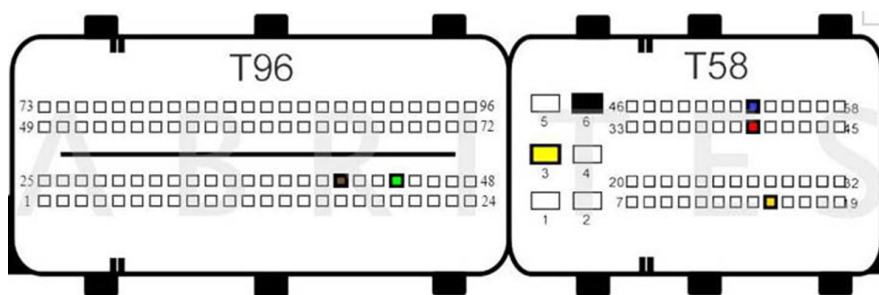
CR41 (EDC17C66)
CR41R (EDC17C66)



T58 Pin 3 - 12V
T58 Pin 4 - GND
T58 Pin 15 - IGN
T58 Pin 41 - CAN H
T58 Pin 54 - CAN L

T96 Pin 35 - PWM
T96 Pin 39 - PWM

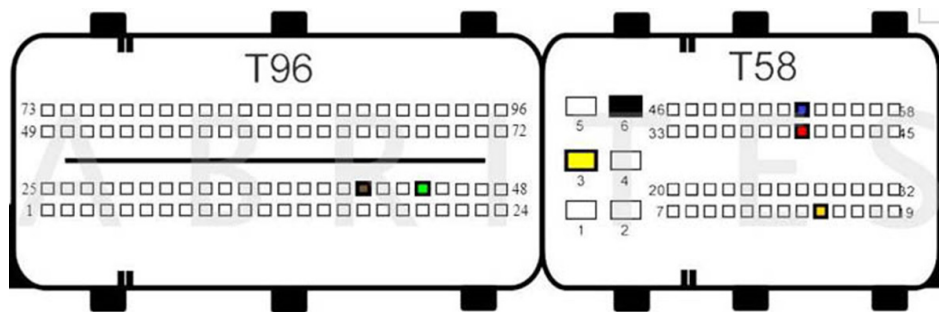
CR40 (EDC17C43)



T58 PIN 3 - 12V+
T58 PIN 6 - GND-
T58 PIN 15 - IGN
T58 PIN 40 - CAN H
T58 PIN 53 - CAN L

T96 PIN 41 - PWM
T96 PIN 44 - PWM

CR43 (EDC17CP60)



T58 PIN 5 - 12V+

T58 PIN 4 - GND-

T58 PIN 15 - IGN

T58 PIN 16 - 12V

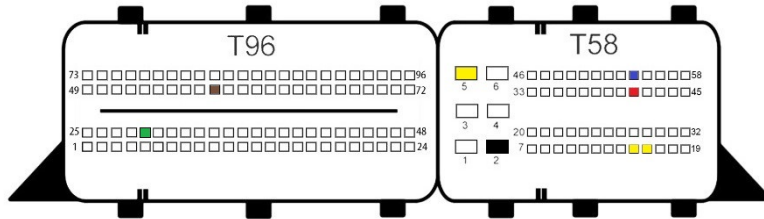
T58 PIN 41 -CAN H

T58 PIN 54 -CAN L

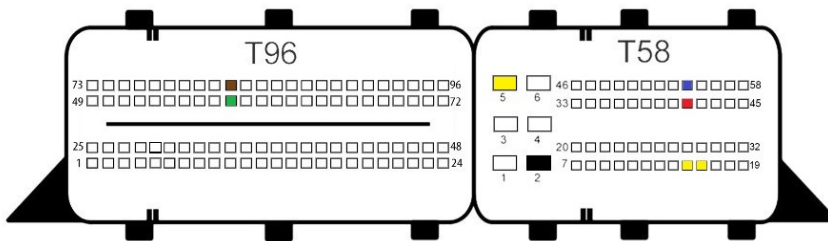
T96 PIN 38 - PWM

T96 PIN 89 - PWM

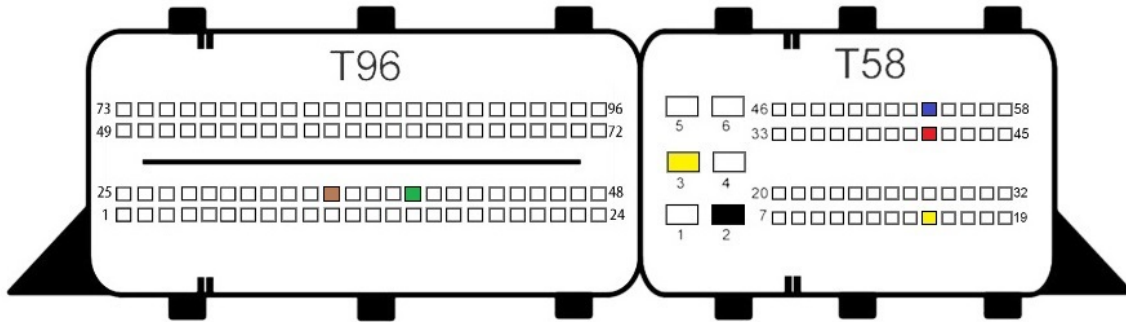
MED41 (MED17.7.7) V1 - CB403 Recommended



MED41 (MED17.7.7) V2 - CB403 Recommended



CR61_470 V1 (EDC17CP57) - CB403 Recommended



T96 PIN 35 - PWM

T96 PIN 39 - PWM

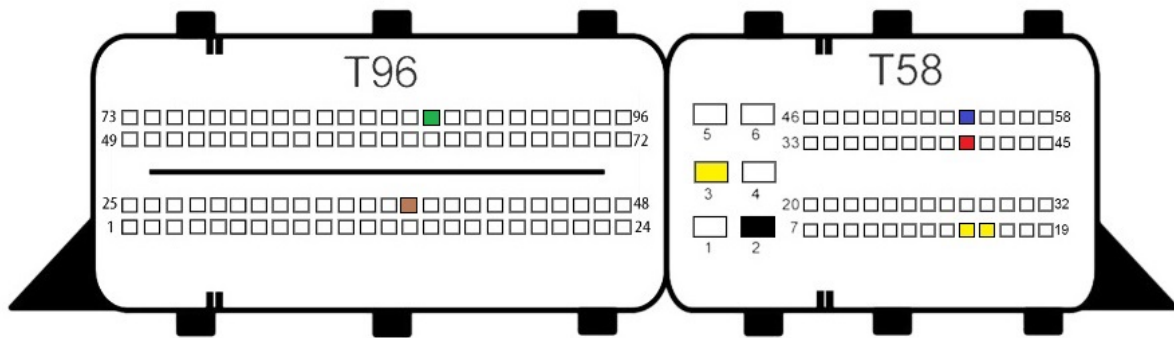
T58 PIN 2 - GND

T58 PIN 3 - B+ 12V

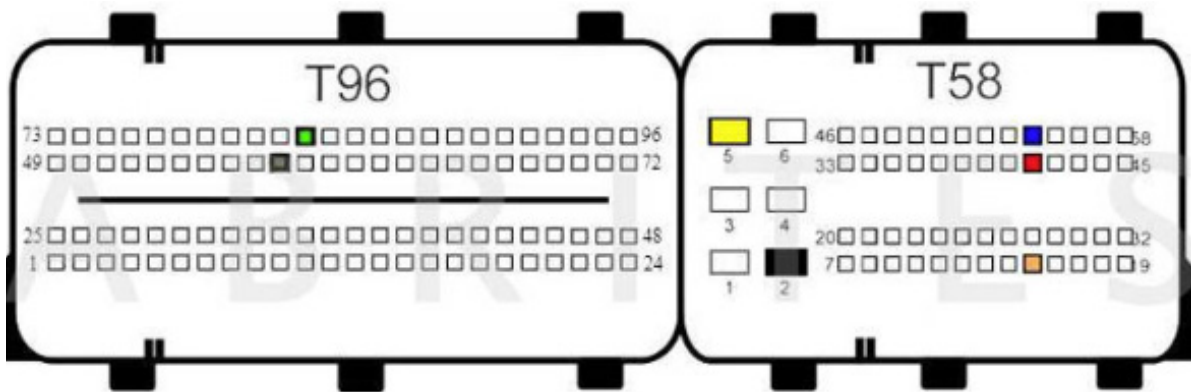
T58 PIN 15 - B+ 12V

T58 PIN 41 - CAN H

CR61_470 V2 (EDC17CP57) - CB403 Recommended



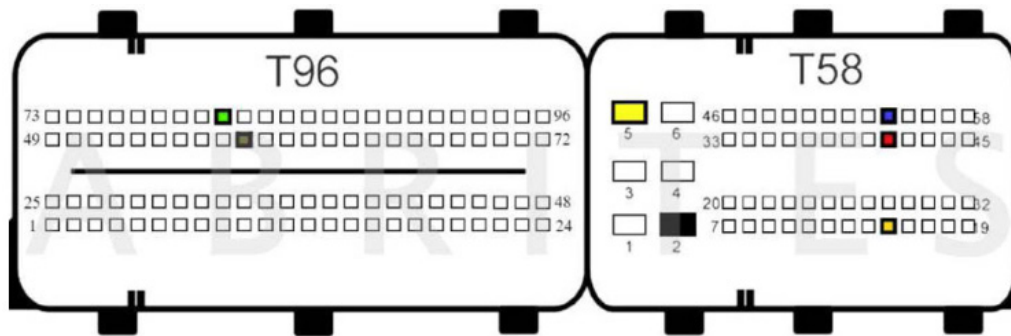
- T96 PIN 38 - PWM
- T96 PIN 87 - PWM
- T58 PIN 2 - GND
- T58 PIN 3 - B+ 12V
- T58 PIN 15 - B+ 12V
- T58 PIN 16 - B+ 12V
- T58 PIN 41 - CAN H
- T58 PIN 54 - CAN L
- MED40 (MED17.7.1)



- T96 PIN 58 - PWM
- T96 PIN 83 - PWM
- T58 PIN 2 - GND
- T58 PIN 5 - B+ 12V
- T58 PIN 15 - IGN
- T58 PIN 41 - CAN H
- T58 PIN 54 - CAN L

MED40 (MED17.7.2)

MED17.7.1 V2



T96 PIN 81 - PWM

T96 PIN 58 - PWM

T58 PIN 2 - GND

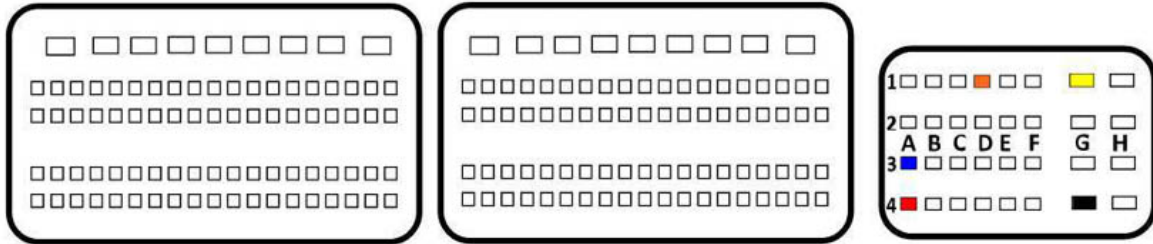
T58 PIN 5 - B+ 12V

T58 PIN 15 - IGN

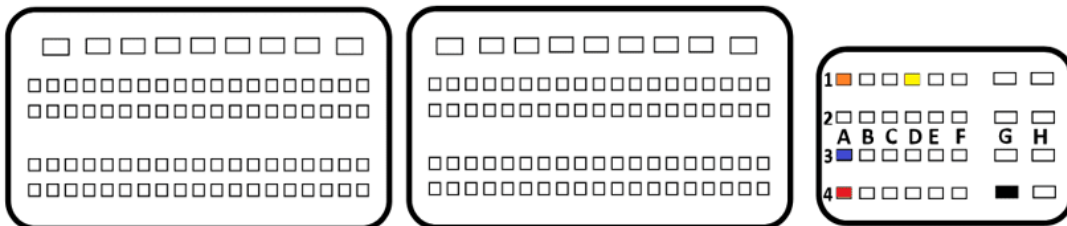
T58 PIN 41 - CAN H

T58 PIN 54 - CAN L

CRR2 MD1CS006 TC298TP V1



CRR2 MD1CS006 TC298TP V1



MRG1 (including 2021+) BOSCH MG1CP002 SPC577 - [CB030](#) strongly recommended!

CB030 has dedicated connector for MG1/MRG1 ECUs

Please check the next section for more details

MRD1 (including 2021+) BOSCH MD1CP002 SPC577 - [CB030](#) strongly recommended!

CB030 has dedicated connector for MD1/MRD1 ECUs

Please check the next section for more details



4.6 MRD1/MRG1 ECUs - CB030 - Mercedes-Benz MD/MG ECU connection cable

The [CB030](#) cable is intended for bench connection with the Engine Control Units from BOSCH types MD1 and MG1 (MRD1, MRG1) in Mercedes-Benz vehicles to:

- Read and save FBS data
- Set the unit to virgin state
- Personalize with data from file (which you can read and save)
- Change VIN

Supported Units:

BOSCH MD1 and MG1 Engine Control Units

Connection types:

1. Connect [CB030](#) directly to AVDI - connect the DB25 connector of the CB030 to the AVDI, and the DB15 connector of the CB030 to the black DB15 adapter with switch for ignition. This adapter is then connected to a 12V power supply via DC connector.
2. Connect [CB030](#) to AVDI and ZN051 DS Box - connect DB25 connector and DB15 connector of CB030 to DS-BOX. Power supply should be provided to the ZN051's dedicated slots. ZN051 DS Box is connected to AVDI via CB402.

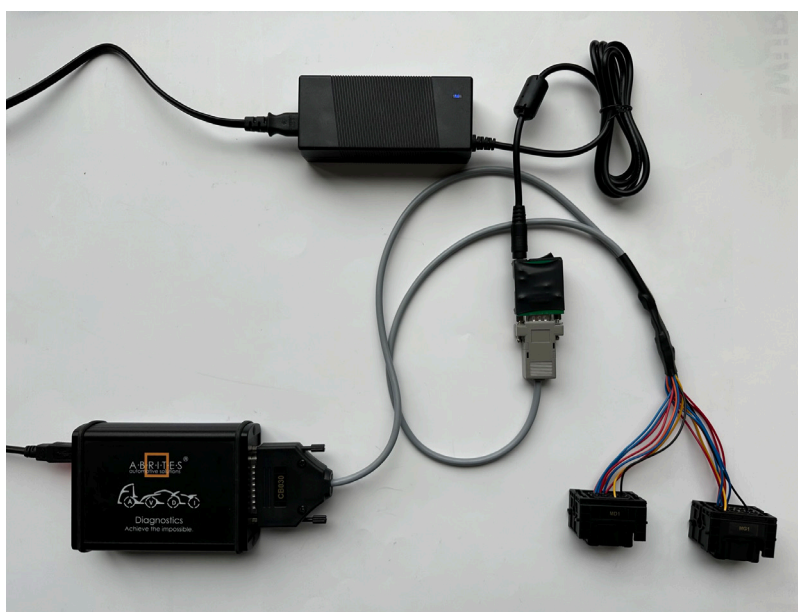
[ZN074](#) can be used for providing power supply in both cases.

Please check next page for the 2 connection types in pictures.

The CB030 has two identical connectors with different pinouts and are labeled for MG1 and MD1 ECUs..

N.B. To avoid damage or malfunction to the ECU or your AVDI, make sure you use the correct type of connector for the ECU you are working with!

Below you may find pictures with the 2 connection types - with and without ZN051 DS Box



4.7 Requirements

- MN034 License
- MN035 License
- ZN051 Abrites Distribution Box
- [ZN030 Abrites ABPROG](#)
- [CB030](#) Mercedes-Benz MD1/MG1 ECU connection cable for FBS4 Manager and ECU Programming Tool
- CB403 Extended Cable Set for all TCUs which require bench connection
- CB012 for internal CAN Connections for personalization or setting to virgin state.

4.8 VIN Exchange

VIN exchange can be executed in the vehicle via OBD, or on bench. If the procedure would not go through, you would need a ZN051 DS Box connection to be able to update the VIN of the unit.

5. TCU Replacement

Transmission Control Unit section of the FBS4 Manager has the following functionalities:

- Read and save FBS data
- Set the unit to virgin state
- Personalize with data from file (which you can read and save)
- Change VIN

All that lets you do a complete TCU exchange, so that the vehicle can start and run properly. One of the many benefits of this update is that when adapting transmissions, we do not simply clone them. Instead, we only transfer the necessary data and you do not lose the calibration values

5.1 Transmission Control Unit (TCU) replacement procedure

You need to be able to read the original unit's data. Connections are described below.

Step 1: Original TCU needs to be connected and you need to select the Transmission Control Unit section of the FBS4 manager. Press "Info" button to establish connection with the unit, and press the "Save" button. This would read the required FBS4 personalization data from the TCU and will let you save it to a file located on your computer.

Step 2: Connect the donor TCU, read the unit and check if everything is in tact. FBS4 Manager > TCU Selection. After that you can proceed with making the unit virgin by pressing the "Virgin" button.

Step 3: You would now have to press "Personalize" button, which would ask you to upload the file, previously saved from the original TCU. Once done, you can press the info button and check if the unit is personalized. If everything is good, you would only have to do one more thing.

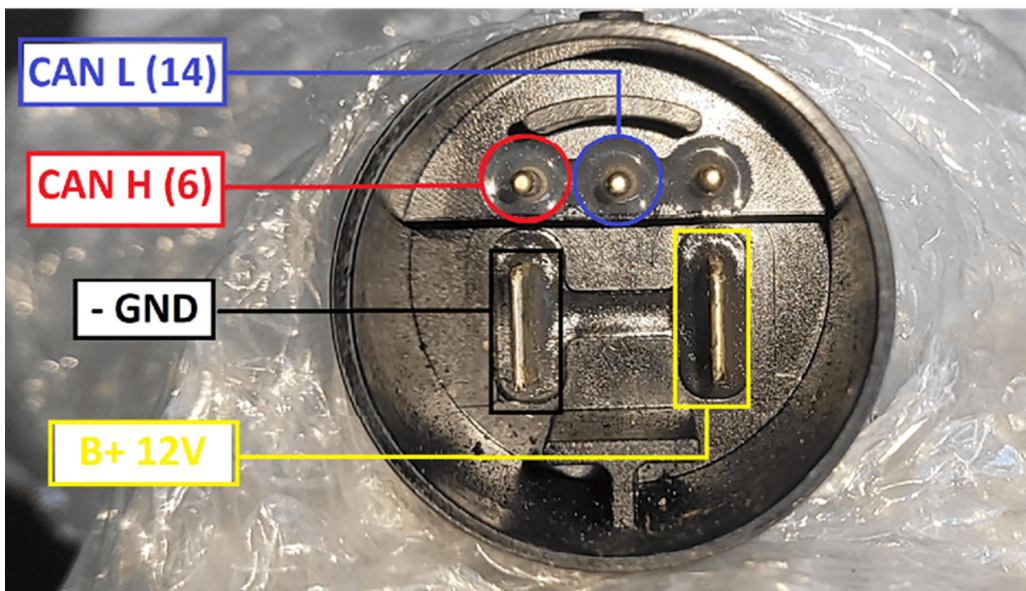
Step 4: Last step to complete the procedure is to write the VIN of the vehicle into the unit by pressing the "VIN" button, and a pop-up window will appear where you need to write the correct VIN to the unit.

5.2 Connections

1. VGSNAG3 (9-gear) - bench connection using DS Box and CB403
2. VGSDCT (dual clutch transmission) bench connection using DS Box and CB403
3. VGS4NAG2 - ABProg programmer required - please check the dedicated section of this manual for details.

5.3 VGSNAG3 9G-tronic

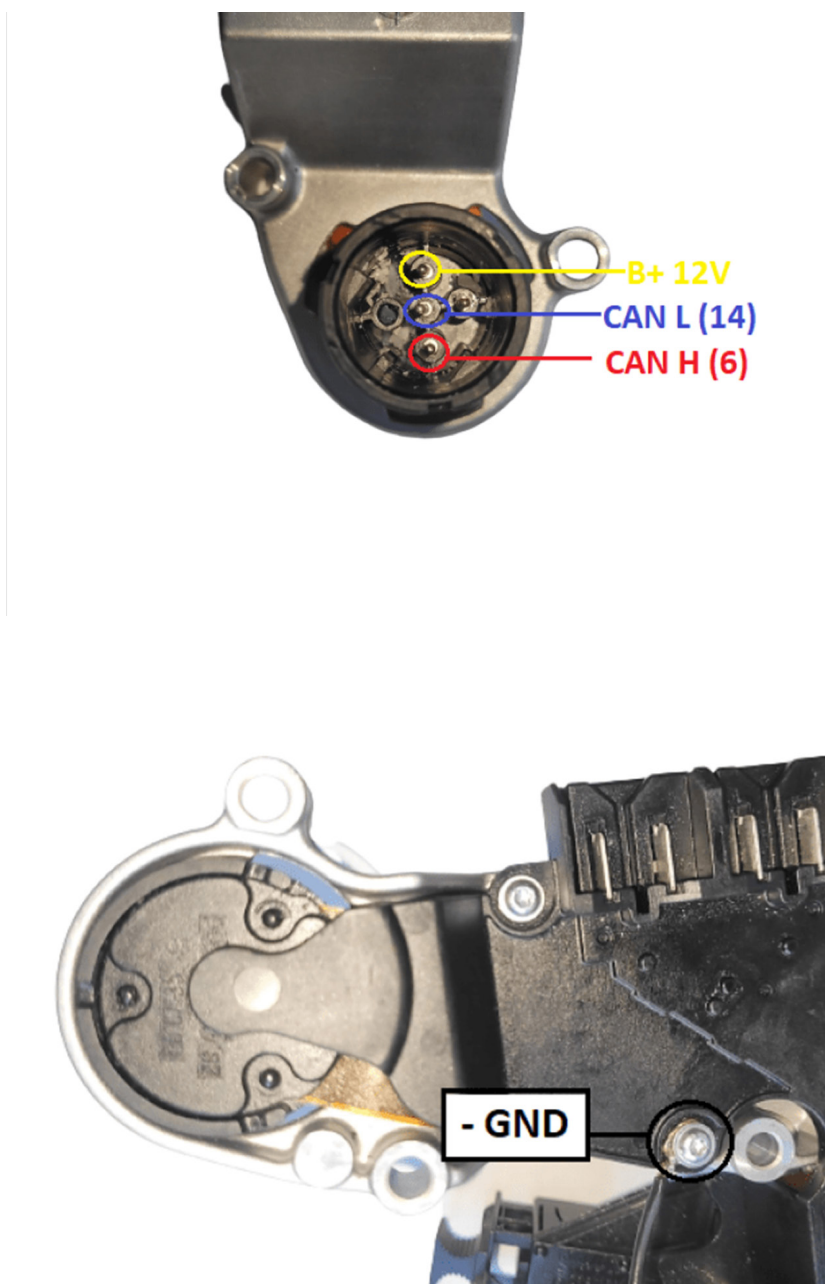
Connection to this TCU can be established with the DS Box and the CB403 cable set.



5.4 VGS2-DCT Mercedes VGSNAG2-FDCT:

Connection to this TCU can be established with the DS Box and the CB403 cable set.

The connector of the FDCT does not have a PIN for GND, in this case you would have connect the GND black connector cable anywhere on the metal body of the TCU



5.5 VGS4NAG2 7-G Tronic

To be able to read and work with the VGS4NAG2 unit, you will have to do some mechanical work. Unit needs to be opened, and ABProg programmer is soldered to read the required data.

VGS4NAG2 is read and virginized, and personalized on bench with the use of ABProg programmer, and soldering to the PCB of the unit.

- Set VGS4 NAG2 modules to virgin state via [ZN030 ABPprog programmer](#)
- Read FBS4 data from VGS4 NAG2 modules via [ZN030 ABPprog programmer](#)
- Write FBS4 personalization data to the TCU via [ZN030 ABPprog programmer](#)

If MN034 license is active, personalization procedure can be executed via OBDII

Additionally, you need to connect to the TCU connector.

We are aware of 2 types or generations of VGS4NAG2 units, which have different type of connectors and PCBs: VGS4-0 NAG2 (Type 1), and VGS4-500 NAG2 (Type 2)

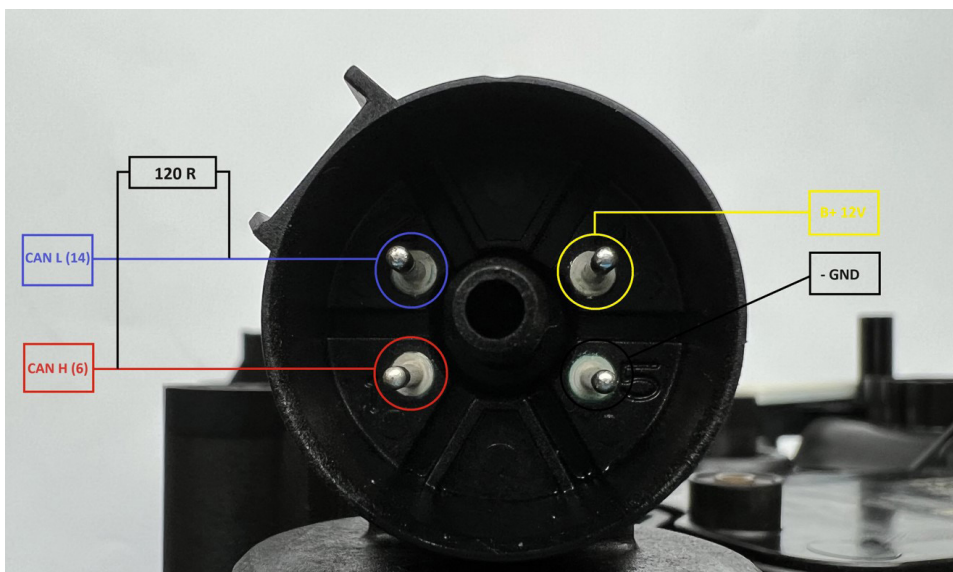
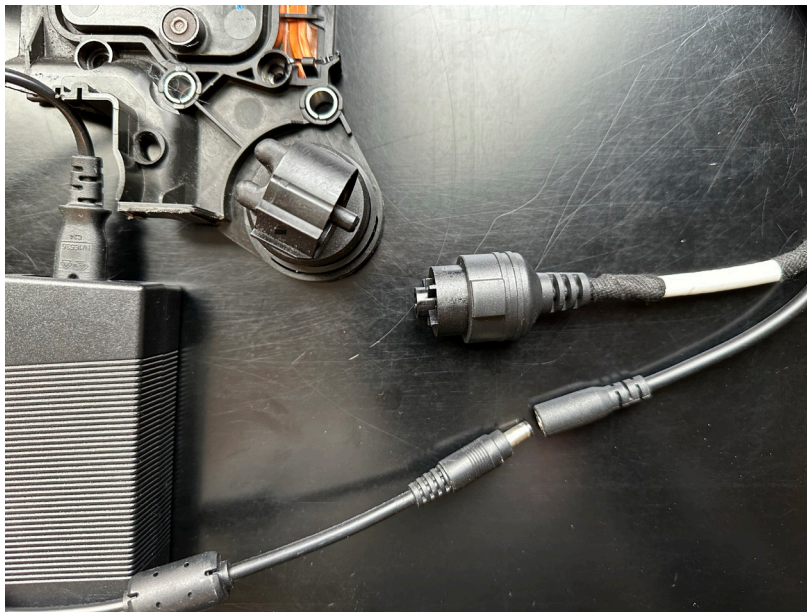
NOTE: Once you cut open the TCU, remove the jelly very gently only where you need to solder, to avoid damage to the unit!

After you complete the task, make sure you close the TCU pcb well, and glue the cover so no oil can enter and damage the unit!

Type 1: VGS4-0-NAG2 on the next page

Type 2: VGS4-500-NAG2 - COMING SOON!

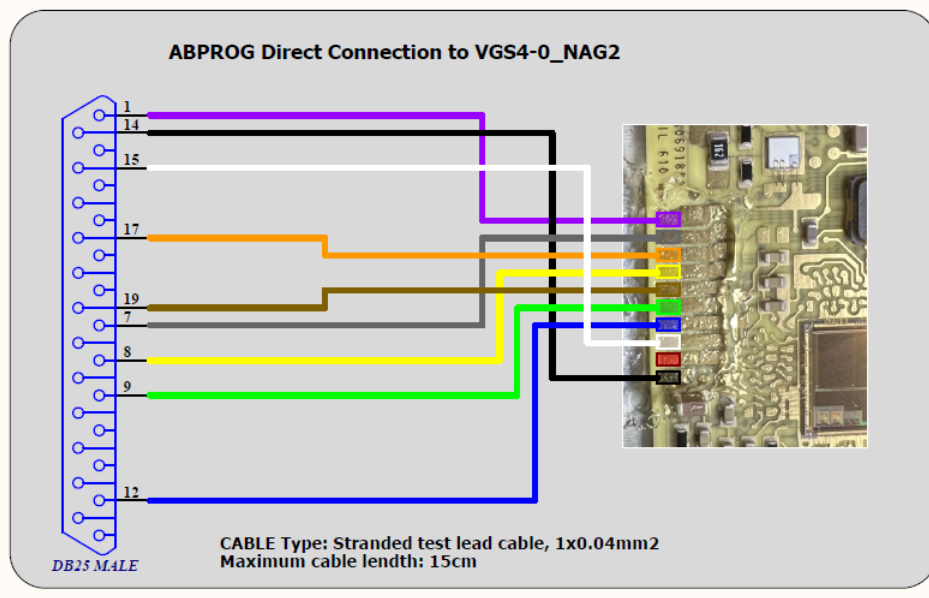
Type 1: VGS4-0-NAG2 You can use the connector from the [CB011](#) set to connect to this type of TCU, and provide power supply with the power adapter from the [ZNO74](#) set.



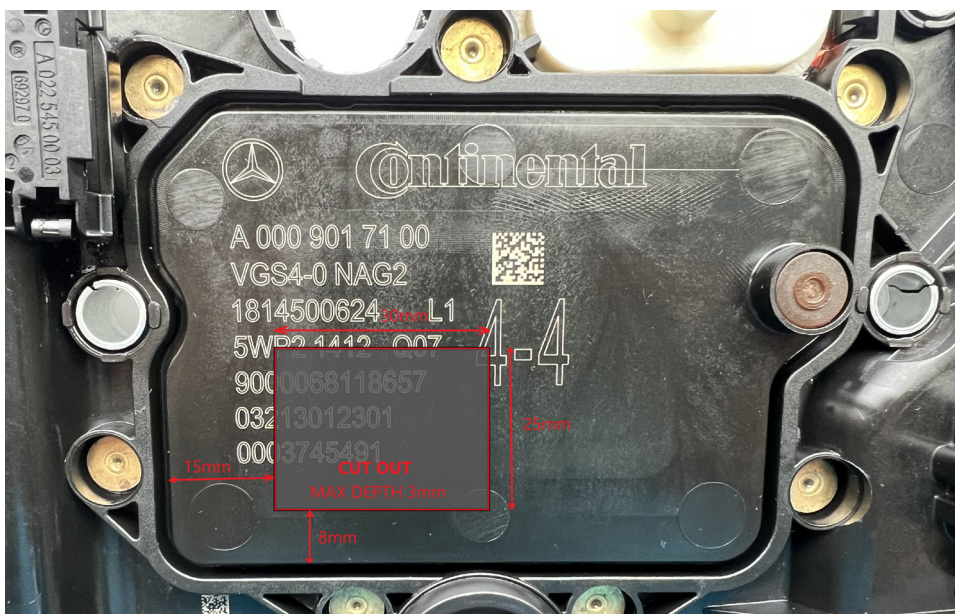
DB25 connection to the VGS4-0 NAG2 PCB TYPE 1

DB25 connector is connected to the [ZN030 ABProg programmer](#).

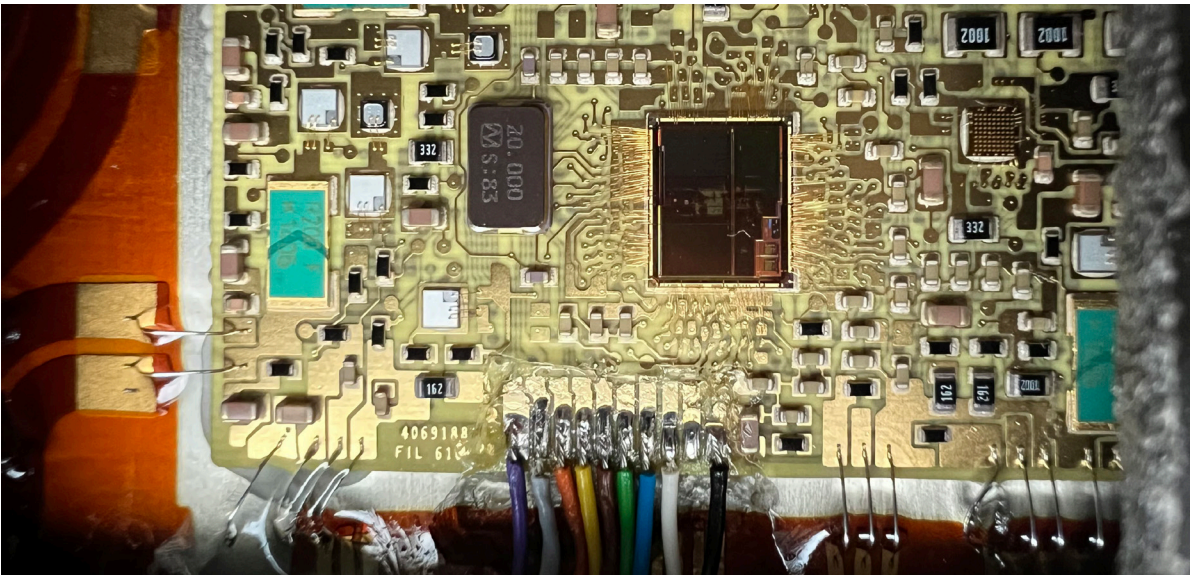
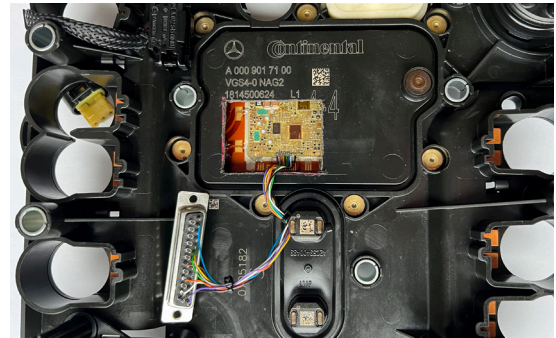
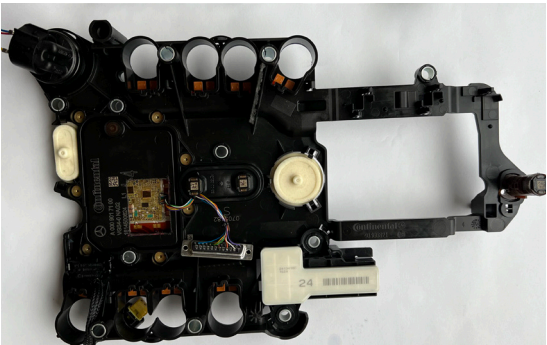
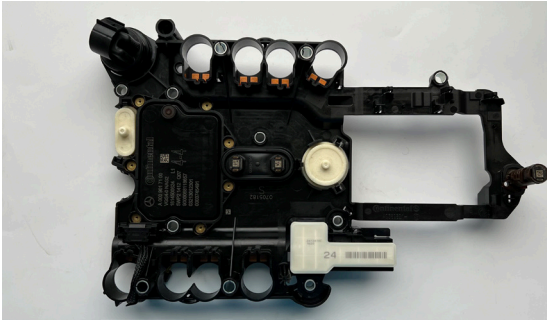
It is very important to pay attention to the specifications on the wired for this connection.



Here is where you have to cup open the plastic cover of the TCU in order to get access to the PCB for ABProg connection.



Here is how to prepare the VGS4-0 NAG2



Type 2: VGS4-500-NAG2 You can connect to this type of connector as a VGSNAG3

You will have to make a connector with a DB25 (connects to AVDI) and the following:

TCU connector CAN L > PIN 15 DB25 (to AVDI)

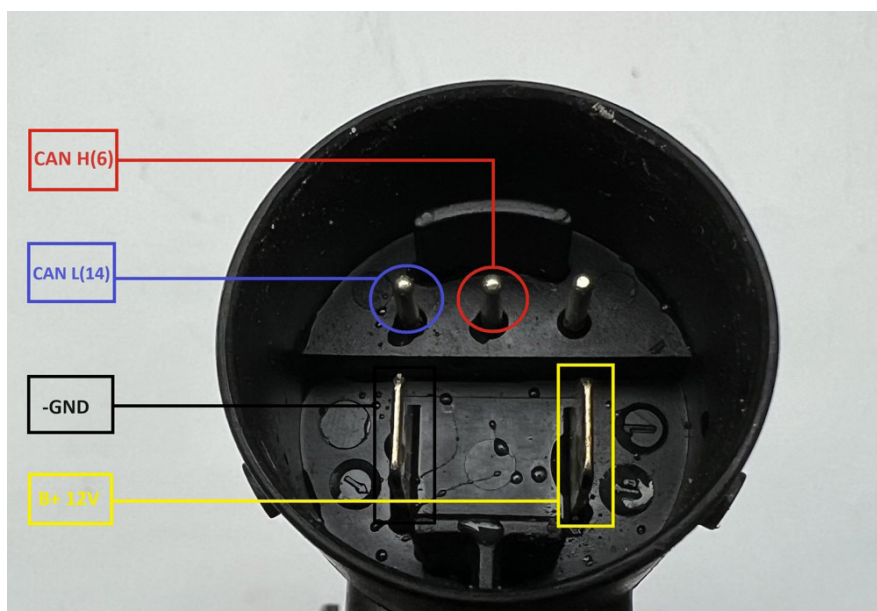
TCU connector CAN H > PIN 7 DB 25 (to AVDI)

TCU Connector B+ 12V > PIN 17 DB25 (to AVDI)

TCU connector GND- > PIN 5 DB25 (to AVDI)

Resistor R120 Ohm between CAN H and CAN L

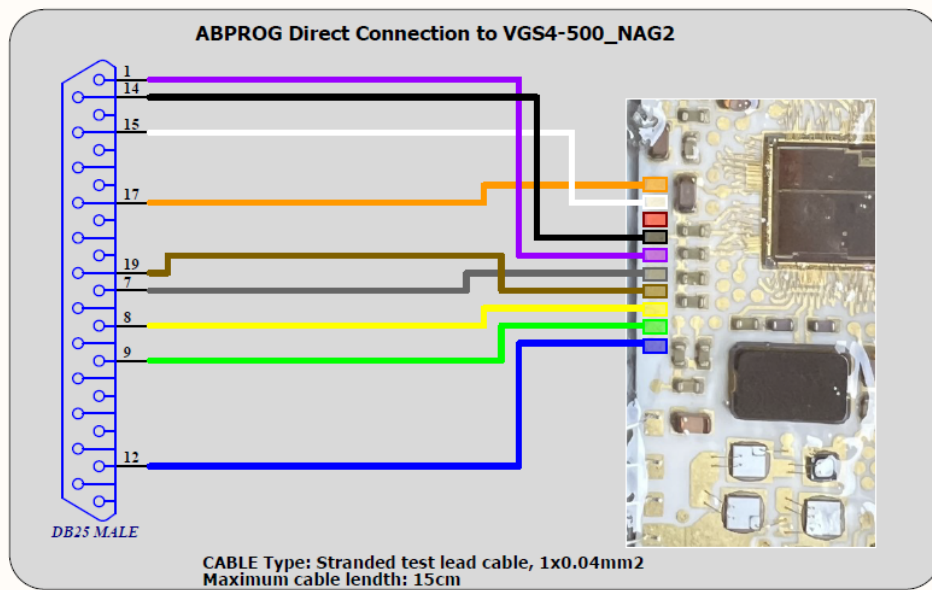
Power supply 12V DC to the connector



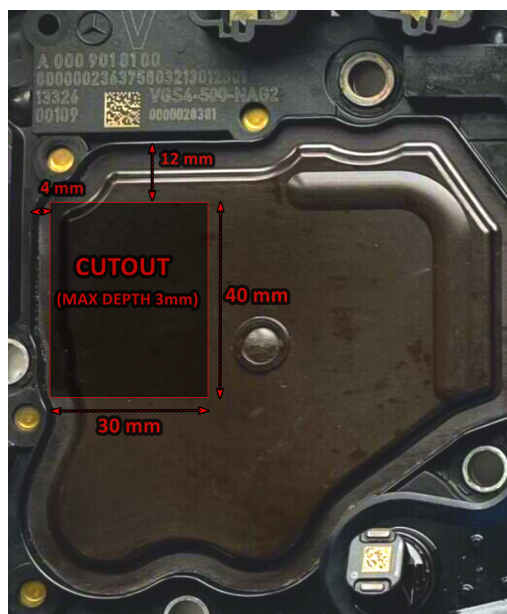
DB25 connection to the VGS4NAG2 PCB (VGS4-500-NAG2) TYPE 2

DB25 connector is connected to the [ZN030 ABProg programmer](#).

It is very important to pay attention to the specifications on the wired for this connection.



Here is where you have to cut open the plastic cover of the TCU in order to get access to the PCB for ABProg connection.



Connection sequence:

1. Connect AVDI to the Laptop via CB104 USB Cable
2. Connect ABProg programmer to the TCU
3. Connect ABProg programmer to AVDI
4. Connect to the TCU connector and power up the set with 12v DC.
5. Start the software

NB! Make sure your ABPRrog programmer is updated with the latest firmware.

5.6 Requirements

Working with VGSNAG3 (9-gear) and VGS-DCT (dual clutch transmission) both require active license EP003 – ECU and TCU Manager, in addition to the MN032/MN034 DAS Manager license.

VGS4NAG2 - MN035 license required, and [ZN030 ABProg](#)

[ZN074](#) set is recommended

CB011 set is recommended

6. ESL (ELV) Repair

This functionality is dedicated to resolving a problem with the “ELV Component Fault” of all FBS4 vehicles equipped with an ESL (ELV), which is preventing the vehicle from being started and driven.

The ESL (ELV) module defects due to dirt, overuse or voltage spikes and sticks in its last position - “locked” or “unlocked” and the vehicle cannot be started.

The function will remove the error in the ESL (ELV) and unlock it, and allow the car to start.

N.B. To avoid this problem happening again in the future, some of the defective components in the ESL (ELV) should be repaired/exchanged.

The function is performed with a direct connection to the ESL (ELV) diagnostic line. It can be executed direct in the vehicle or on bench.

Required software license: MN033 – Mercedes-Benz FBS4 Vehicles Electronic Steering Lock Repair

6.1 Connections

Connection in the vehicle (using Distribution box):

1. Connect [ZN051 Distribution Box](#) between AVDI and CB100/CB106 OBD-II cable
2. Connect the CB100/CB106 OBD-II to the OBD-II port of the vehicle
3. Connect AVDI to PC through CB104 USB A-B cable
4. Use a needle from the ZN051 set to puncture the LIN (K-line) going to the ELV and connect to it (or to the LIN cable of the EZS/EIS (yellow/green))
5. Connect the needle to the K7 socket of the ZN051 Distribution box

Connection in the vehicle (using CB026):

1. Connect CB026 between AVDI and CB100/CB106 OBD-II cable
2. Connect the OBDII cable (CB100/CB106) to the OBD port of the vehicle
3. Connect AVDI to PC through CB104 USB A-B cable
4. Use the needle from CB026 and connect LIN of ESL (or LIN of EZS(yellow/green)) to the green wire of CB026

Connection on bench (using ZN051 Distribution box):

1. Connect ZN051 Distribution Box to AVDI
2. Connect AVDI to PC through CB104 USB A-B cable
3. Connect ZN051 distribution box to an external power supply using the B+ and GND sockets
4. Connect B+, GND and LIN of the ESL (ELV) to the B+, GND and K7 socket of the ZN051 Distribution box

Connection on bench (using CB026):

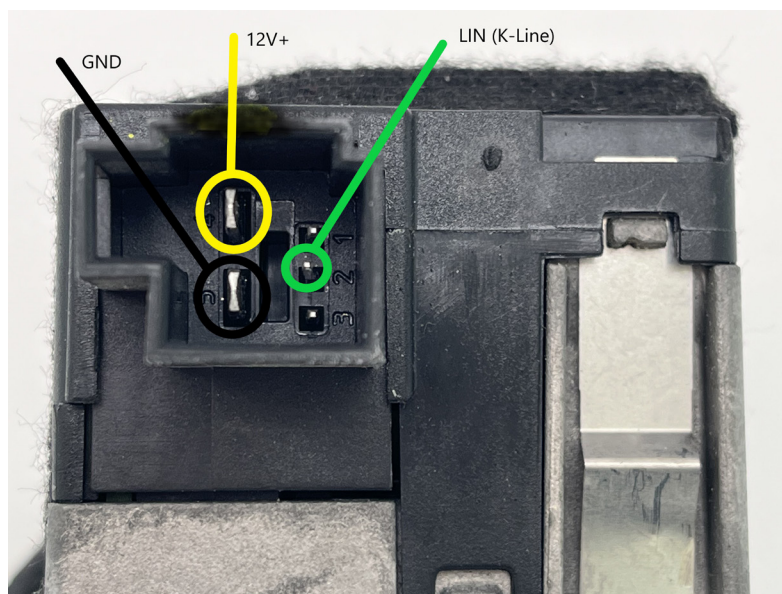
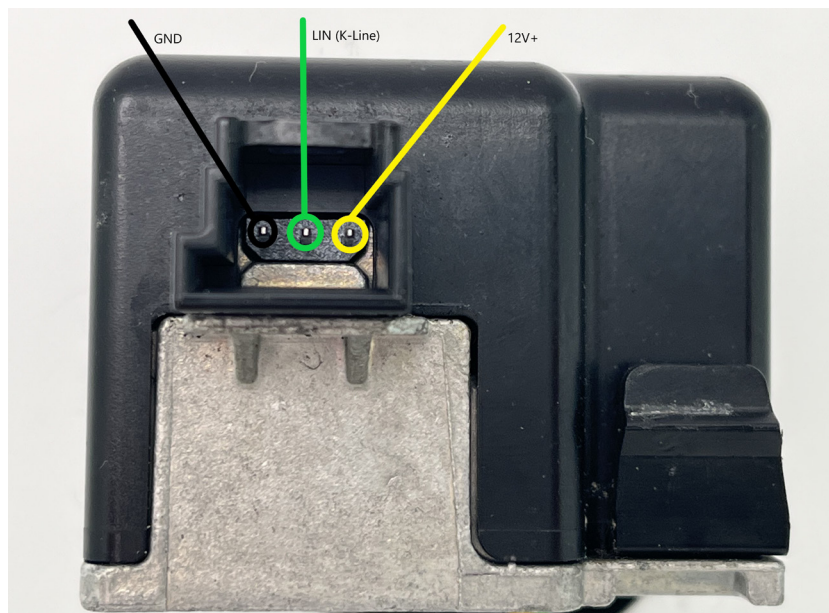
1. Connect CB026 to AVDI
2. Connect AVDI to PC through CB104 USB A-B cable
3. Connect 1A power supply to the power supply connector of CB026
4. Connect B+, GND, LIN of ESL to B+, GND, green wire of CB026

6.2 ESL (ELV) diagrams/pinouts for connection on bench.

Below you can see the 2 types of connectors and their pinouts:

Picture 1 - 3 PIN Connector

Picture 2 - 5 PIN Connector



6.3 Procedure Execution

When the connection is established, please follow these steps to repair the ESL (ELV):

1. Open the Abrites Quick Start menu > Mercedes-Benz > FBS4
2. Select Steering Lock
3. Press the button "Info" and make sure you see the information of the Steering Lock, and the error is also displayed
4. Press the button "Repair" - at this point, the ESL (ELV) will be unlocked, and error will be removed from the ESL (ELV) memory.

After performing this procedure, you could start and drive the vehicle. We would suggest getting the vehicle in the workshop, cleaning and repairing the defective parts in the ESL (ELV).

Video 1: <https://www.youtube.com/watch?v=YSzF7eu7bTQ>

Video 2: <https://www.youtube.com/watch?v=7hXThRq1kHY>

7. DSM replacement

Direct Select Module (DSM/DSM222) section of the FBS4 Manager has the following functionalities:

- Read and save FBS data
- Set the unit to virgin state
- Personalize with data from file (which you can read and save)
- Change VIN

All that lets you do a complete DSM exchange so that the vehicle can start and run properly.

Once all the connections (described below) are done, you can open the FBS4 Manager > select the DSM > read the module.

7.1 Direct Select Module (DSM) replacement procedure

You need to be able to read the original unit's data. Connections are described below.

Original DSM needs to be connected and you need to open the DSM selection of the FBS4 manager, and press the **"Save"** button. This would read the required data from the DSM and let you save it to a file located on your computer.

Next step is to connect the donor DSM and read the unit (by pressing "info") and check if everything is in tact. FBS4 Manager > DSM Selection. After that you can proceed with making the unit virgin by pressing the **"Virgin"** button.

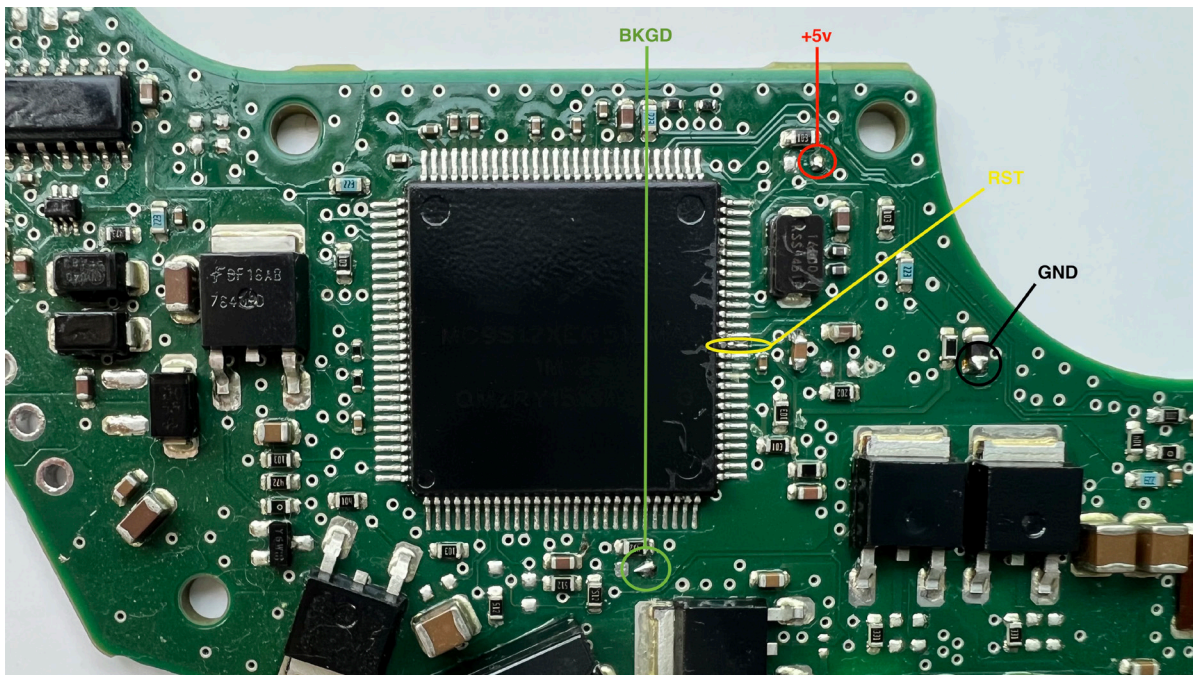
You would now have to press **"Personalize"** button, which would ask you to upload the file, previously saved from the original DSM. Once done, you can press the "info" button and check if the unit is personalized and activated. If everything is good, you would only have to do one more thing.

Last step to complete the procedure is to write the VIN of the vehicle into the unit by pressing the **"VIN"** button, and a pop-up window will appear where you need to write the correct VIN to the unit.

7.2 Connections

The ZN086 adapter is soldered onto four points on the PCB (one of which is the lifted pin) and then connected to the ABPROG > the ABPROG is connected to AVDI, and AVDI to your laptop.

Important: The PIN that needs lifting, is specific for each processor, and you need to find that information first. Since there are many variations, you will need to do your own research and get to the processor's data sheet. The PIN that needs lifting is the "RST" or reset PIN.



7.3 Requirements

- [ZN030 ABProg Programmer](#)
- [ZN086 - MC9S12 ADAPTER for ABPROG](#)

8 More functionalities of the FBS4 Manger

EIS selection > info > gives the identification of the module and information is the unit is personalized, activated, and if the engine start is enabled

Car Key selection > info > identification of the unit, number of keys programmed to the vehicle

8.1 ECU Recovery procedure

In case you need to recover your Engine Control Unit you can follow these steps:

- Open FBS4 Manager
- Press Info to establish connection to the unit
- Check the status and proceed to programming if needed

To restore: be aware what you need to restore and press "Program"

- On the next screen select "Load file from server"
- A screen will pop-up, where you have to manually write the number of the software you need to update.

*More details in the next update, when a video will also be available for directions on how to execute the procedure

