



ABRITES DIAGNOSTICS FOR PORSCHE ONLINE

User manual
version 1.0



Important notes

The Abrites software and hardware products are developed, designed and manufactured by Abrites Ltd. During the production process we comply to all safety and quality regulations and standards, aiming at highest production quality. The Abrites hardware and software products are designed to build a coherent ecosystem, which effectively solves a wide range of vehicle-related tasks, such as:

- Diagnostic scanning;
- Key programming;
- Module replacement,
- ECU programming;
- Configuration and coding.

All software and hardware products by Abrites Ltd. are copyrighted. Permission is granted to copy Abrites software files for your own back-up purposes only. Should you wish to copy this manual or parts of it, you are granted permission only in case it is used with Abrites products, has "Abrites Ltd." written on all copies, and is used for actions that comply to respective local law and regulations.

Warranty

You, as a purchaser of Abrites hardware products, are entitled of a two-year warranty. If the hardware product you have purchased has been properly connected, and used according to its respective instructions, it should function correctly. In case the product does not function as expected, you are able to claim warranty within the stated terms. Abrites Ltd. is entitled to require evidence of the defect or malfunction, upon which the decision to repair or substitute the product shall be made.

There are certain conditions, upon which the warranty cannot be applied. The warranty shall not apply to damages and defects caused by natural disaster, misuse, improper use, unusual use, negligence, failure to observe the instructions for use issued by Abrites, modifications of the device, repair works performed by unauthorized persons. For example, when the damage of the hardware has occurred due to incompatible electricity supply, mechanical or water damage, as well as fire, flood or thunder storm, the warranty does not apply.

Each warranty claim is inspected individually by our team and the decision is based upon thorough case consideration.

Read the full hardware warranty terms on our [website](#).

Copyright information

Copyright:

All material herein is Copyrighted © 2005-2023 Abrites, Ltd.
Abrites software, hardware, and firmware are also copyrighted
Users are given permission to copy any part of this manual provided that the copy is used with Abrites products and the "Copyright © Abrites, Ltd." statement remains on all copies.
"Abrites" is used in this manual as a synonym with "Abrites, Ltd." and all it's affiliates
The "Abrites" logo is a registered trademark of Abrites, Ltd.

Notices:

The information contained in this document is subject to change without prior notice. Abrites shall not be held liable for technical/editorial errors, or omissions herein.
Warranties for Abrites products and services are set forth in the express written warranty statements accompanying the product. Nothing herein should be construed as constituting any additional warranty.
Abrites assumes no responsibility for any damage resulting from the use, misuse, or negligent use of the hardware or any software application.

Safety information

The Abrites products are to be used by trained and experienced users in diagnostics and reprogramming of vehicles and equipment. The user is assumed to have a good understanding of vehicle electronic systems, as well as potential hazards while working around vehicles. There are numerous safety situations that cannot be foreseen, thus we recommend that the user read and follow all safety messages in the available manual, on all equipment they use, including vehicle manuals, as well as internal shop documents and operating procedures.

Some important points:

Block all wheels of the vehicle when testing. Be cautious when working around electricity.

Do not ignore the risk of shock from vehicle and building-level voltages.

Do not smoke, or allow sparks/flame near any part of the vehicle fuel system or batteries.

Always work in an adequately ventilated area, vehicle exhaust fumes should be directed towards the exit of the shop.

Do not use this product where fuel, fuel vapours, or other combustibles could ignite.

In case any technical difficulties occur, please contact the
Abrites Support Team by email at support@abrites.com.

Table of contents

1. Introduction
2. Vehicle diagnostics with Abrites for Porsche
 - 2.1 Scope of the manual
 - 2.2 Getting Started
3. Diagnostic Functionalities
 - 3.1 Adaptations
 - 3.2 Long Coding
 - 3.3 Measured Values
 - 3.4 Security Access
4. Programming
5. Read Component Security SID7

List of revisions

Date	Chapter	Description	Revision
08.12.2022	ALL	Document created.	1.0

1. Introduction

Congratulations on choosing our wonderful product!

The “Abrates Diagnostics for Porsche Online” is an online server based Abrites software for Porsche vehicles

In order to operate, the software requires you to have an AVDI interface, a Windows based PC with a minimum of 1024MB RAM, 64GB of free hard drive space and at least Windows 7 64bit Service Pack 1 or later version to operate. For optimal operation, it is always recommended to have the latest software version installed, active AMS, and a stable Internet connection.

With the help of this software you can perform basic and advanced diagnostic functionalities such as reading and clearing of diagnostic trouble codes (DTCs), monitoring live data, etc, coding options, and advanced functionalities like module reflashing for Porsche Online vehicles

For proper operation of your diagnostic software you will need a corresponding interface for connection between your PC and vehicle named “AVDI”. “AVDI” stands for “Abrates Vehicle Diagnostic Interface.” It is produced by Abrites Ltd. and intended to act as an interface between the PC and the electronic control units.

Please check the “license viewer” installed on your computer for your unique interface ID number.

The software is in constant development and its functionality is ever growing. The intentions for the Abrites Diagnostics for Porsche Online are to be used by automotive specialists, but it is simultaneously designed in such a way that is accessible to enthusiasts as well.

AVDI should be used with ABRITES software produced by Abrites Ltd.

ABRITES is a trade mark of Abrites Ltd

2. Vehicle diagnostics with Abrites for Porsche

2.1 Scope of the manual

This document describes the usage of Abrites Diagnostics for Porsche Online. The document is applicable for the latest software version. In this manual we suppose that the software for your AVDI interface is already installed. Please refer the "AVDI Common User's Manual" in case it is not.

System requirements:

Minimum system requirements – Windows 7 SP1 + 2GB RAM
(recommended 4GB)

2.2 Getting Started

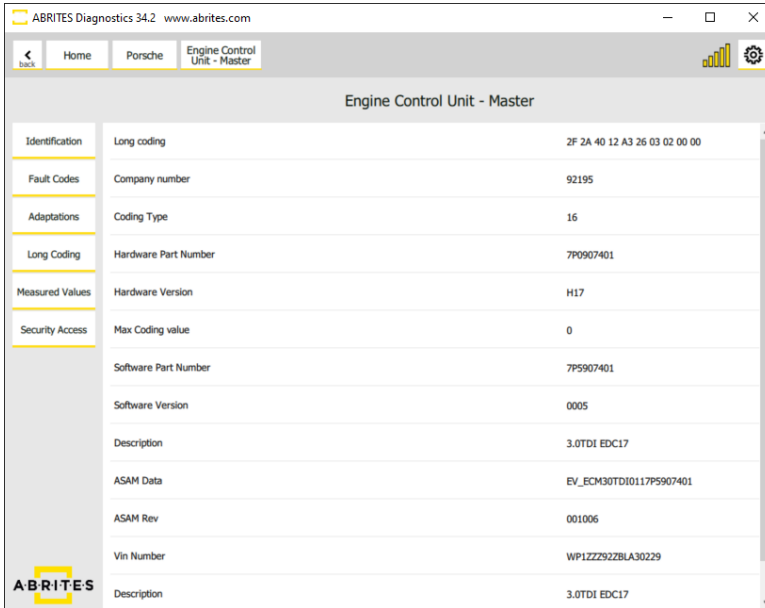
You can start Abrites Diagnostics for Porsche Online by starting the Abrites Quick Start application and selecting Porsche. On the 2nd page of the Porsche option, you need to select the following button.



Address	Name	PartNum	Description	Protocol	Faults
01	Engine Control Unit - Master	7P5907401	3.0TDI EDC17	ISOTP	5 faults
09	Body control module - Front	7PP907064DD	BCM_VORNE	ISOTP	18 faults
0b	Body control module - Rear	7PP907279T	BCM_HINTEN	ISOTP	18 faults
15	Airbag	7P0959655B	VW10Airbag508	ISOTP	26 faults
17	Dash Board	7P5920904F	KIE2 V6_D♦♦♦♦♦	ISOTP	13 faults
19	Gateway			ISOTP	1 fault
34	Level control system	7P5907553K	PASM	ISOTP	16 faults

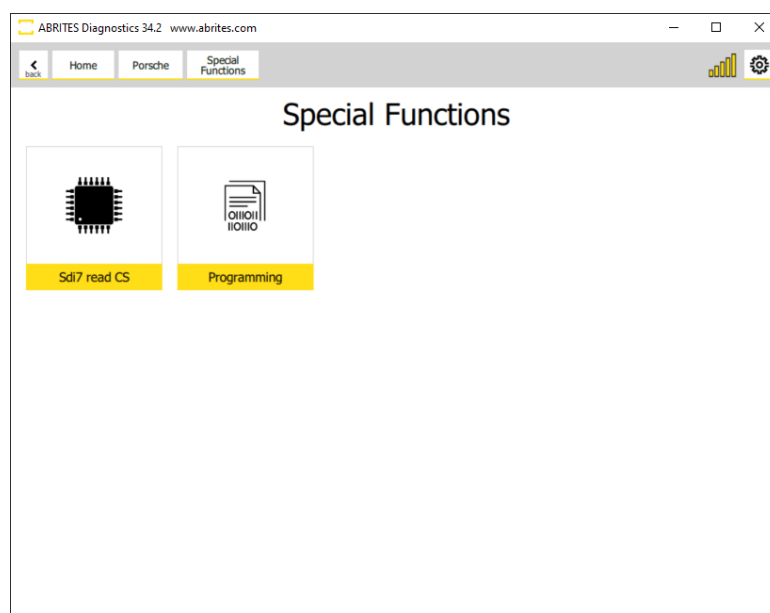
3. Diagnostic Functionalities

The Abrites software for Porsche Online has two major streams of functionalities - basic and advanced. The basic functionalities are performed from the diagnostic menu and include: read and clear DTCs, Adaptations, Long Coding, Live Data monitoring, Security Access. The advanced functionalities are called special functions and are found in the dedicated menu "Special functions". For the moment we have the following special functions: Programming, and reading CS bytes of SID7 electronic control units.



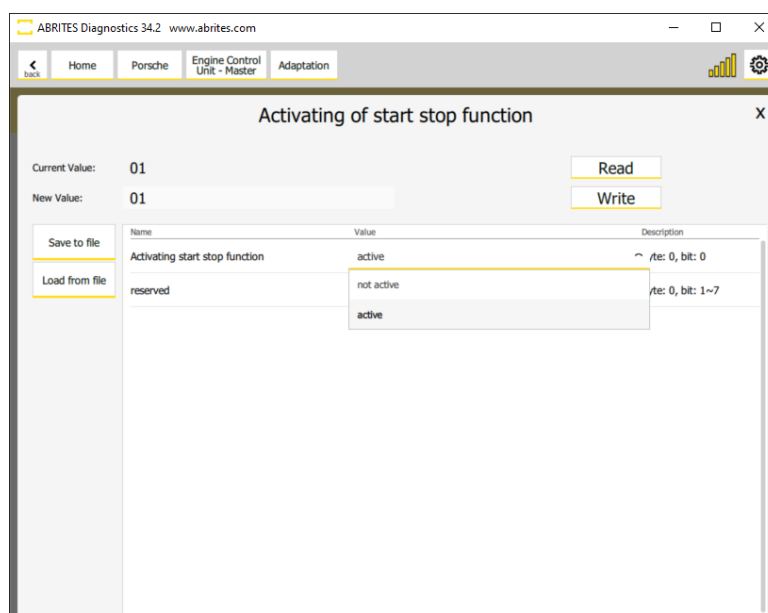
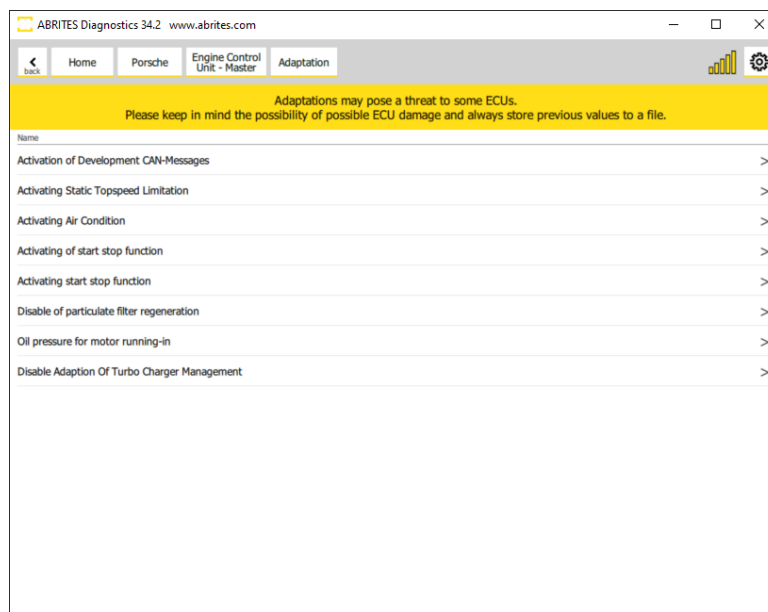
The screenshot shows the 'Engine Control Unit - Master' diagnostic menu in the Abrites Diagnostics 34.2 software. The interface includes a navigation bar with 'Home', 'Porsche', and 'Engine Control Unit - Master' tabs. The main content area displays a list of diagnostic parameters and their values:

Category	Parameter	Value
Identification	Long coding	2F 2A 40 12 A3 26 03 02 00 00
Fault Codes	Company number	92195
Adaptations	Coding Type	16
Long Coding	Hardware Part Number	7P9907401
Measured Values	Hardware Version	H17
	Max Coding value	0
Security Access	Software Part Number	7P5907401
	Software Version	0005
	Description	3.0TDI EDC17
	ASAM Data	EV_ECM30TDI0117P5907401
	ASAM Rev	001006
	Vin Number	WP1ZZZ92ZBLA30229
	Description	3.0TDI EDC17



3.1 Adaptations

This option give you access to the adaptation channels, this you are able to code different options and modules and it works like a coding helper. We have a large database of options for codings, greater than all other competitors. Once you choose what you want to do and open the next menu, you can use the read and write buttons to execute the procedure.



3.2 Long Coding

As in the adaptations, this functionality lets you change parameters in the vehicle and code different options and function. In the screenshot below you can see an example of the long coding written above, if you change a parameter, it would change the coding and you are able to then write it to the vehicle, so that you store the updates.

The screenshot shows the ABRITES Diagnostics 34.2 web interface. The browser title is "ABRITES Diagnostics 34.2 www.abrites.com". The navigation menu includes "Home", "Porsche", "Engine Control Unit - Master", and "Long Coding".

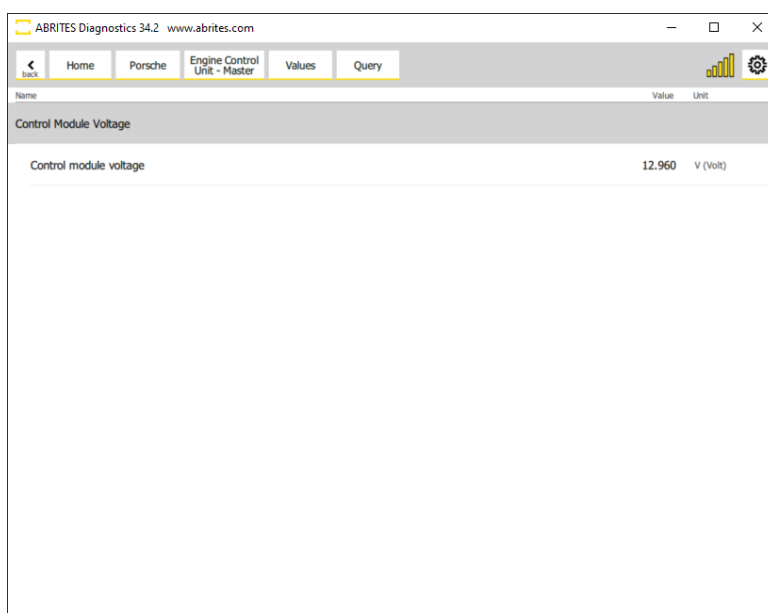
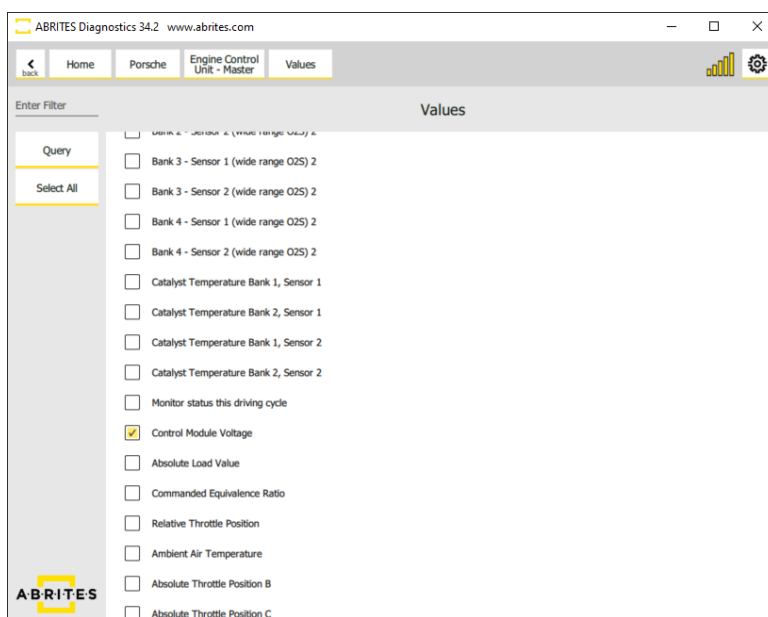
Current Value: `2F 2A 40 12 A3 26 03 02 00 00` Read
 New Value: `2F 2A 40 12 A3 26 03 02 00 00` Write

Name	Value	Description
Brand	Porsche	Byte: 0, bit: 0~2
Satellite Tracking System	available	Byte: 0, bit: 3
Maintenance Interval Extension	not available	Byte: 0, bit: 4
Reserved 2	<input checked="" type="checkbox"/>	Byte: 0, bit: 5
right- / left-hand drive	left-hand drive	Byte: 0, bit: 6
Reserved 1	<input type="checkbox"/>	Byte: 0, bit: 7
Vehicle Class	Special Vehicle Class	Byte: 2, bit: 0~2
Vehicle Type	Limousine	Byte: 2, bit: 3~5
Generator Load Signal	LIN	Byte: 2, bit: 6
Reserved 3	<input type="checkbox"/>	Byte: 2, bit: 7
Market	North America	Byte: 4, bit: 0
Emission Type	EU3	Byte: 3, bit: 0~3
Emission Steem Pressure Type	critical	Byte: 3, bit: 4

ABRITES logo is visible in the bottom left corner of the interface.

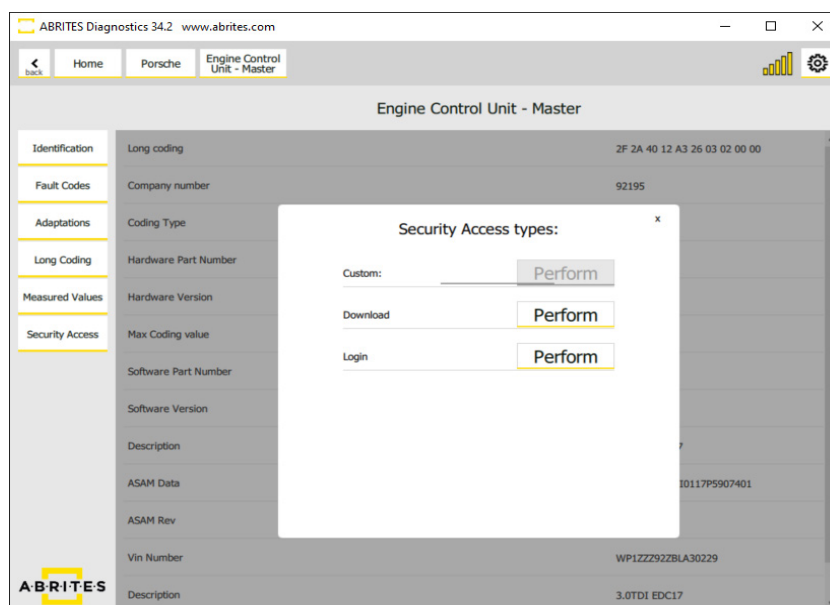
3.3 Measured Values

This is a very important diagnostic functionality, which lets you monitor the values in the electronic control modules in real time.



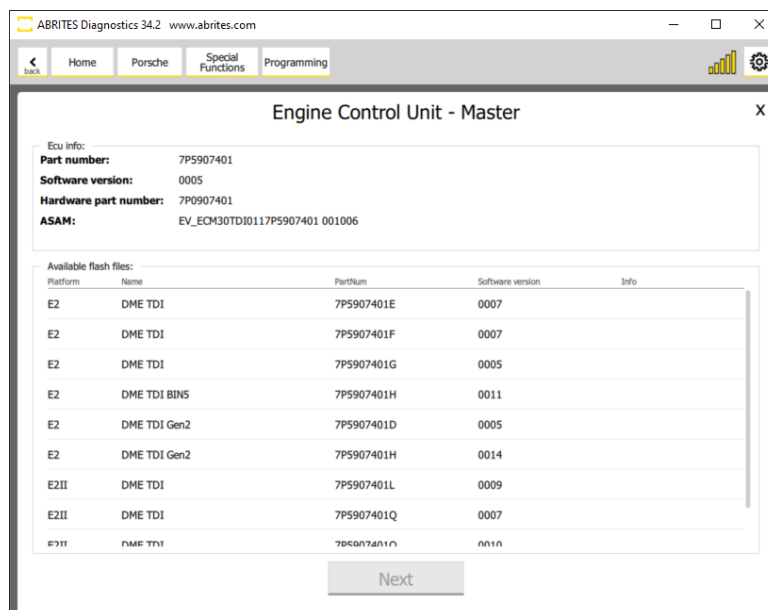
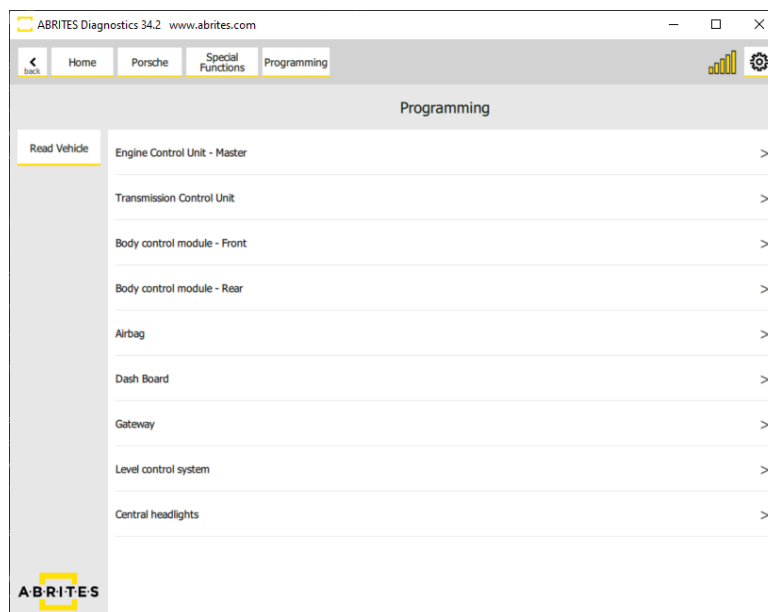
3.4 Security Access

This option lets you unlock full functionality of each control unit in the vehicle. Just as the codings, we have a large database which lets you do the security access to great number of units. Security access is needed when you want to change coding options, and in other cases.



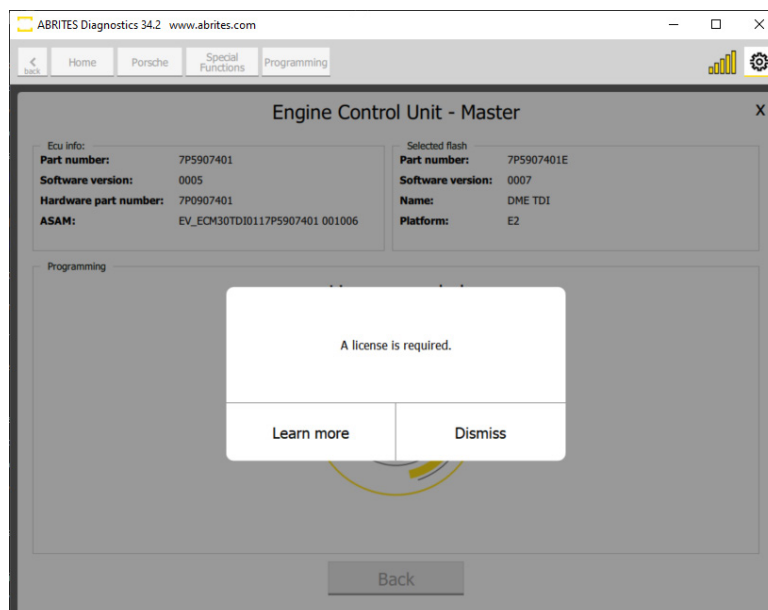
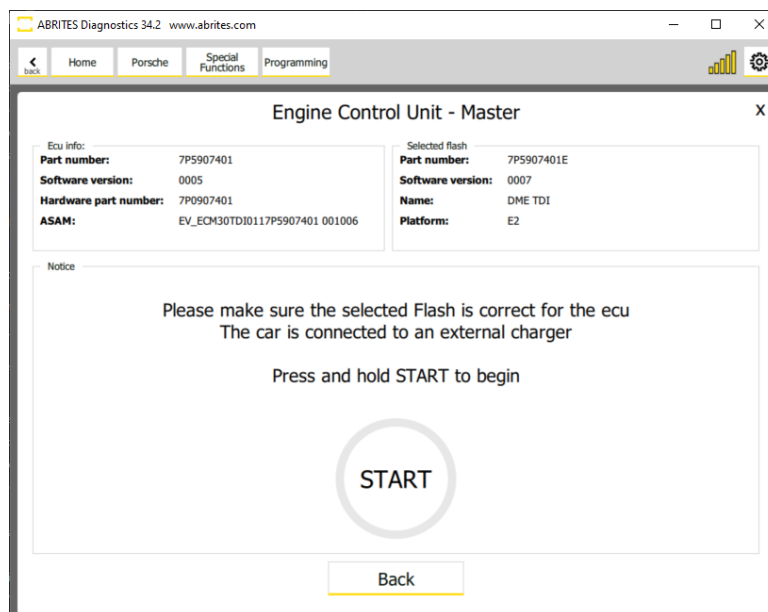
4. Programming

The Porsche Online software gives you more than the standard diagnostic procedures. Now you have the opportunity to do module re-flashing by OBDII, which is very useful when it comes to updating your module with a required flash file. You can access it from the “Special functions” menu in the software and then select “Programming.” Once you open the menu you will see the list of available modules in your vehicle, applicable for this procedure, in order to proceed you need to select the unit you want to work on. After that, you will see the list of available flash versions, please check the picture below:

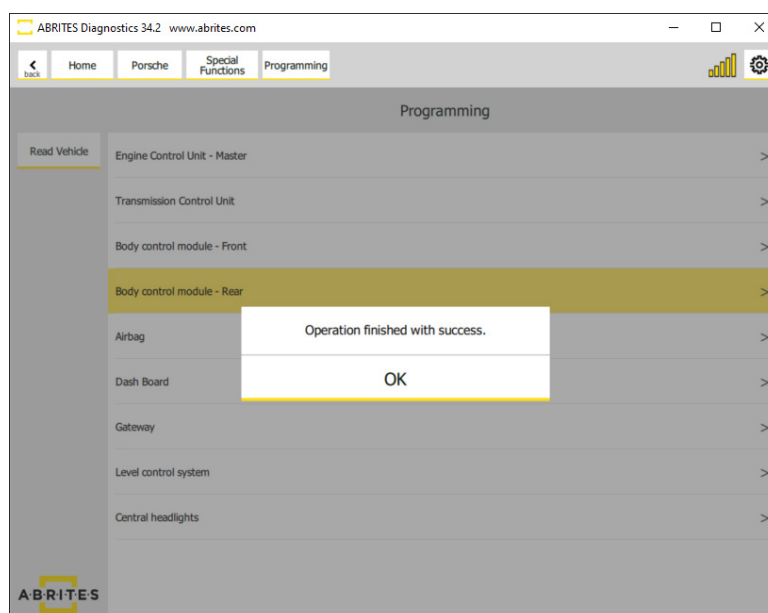
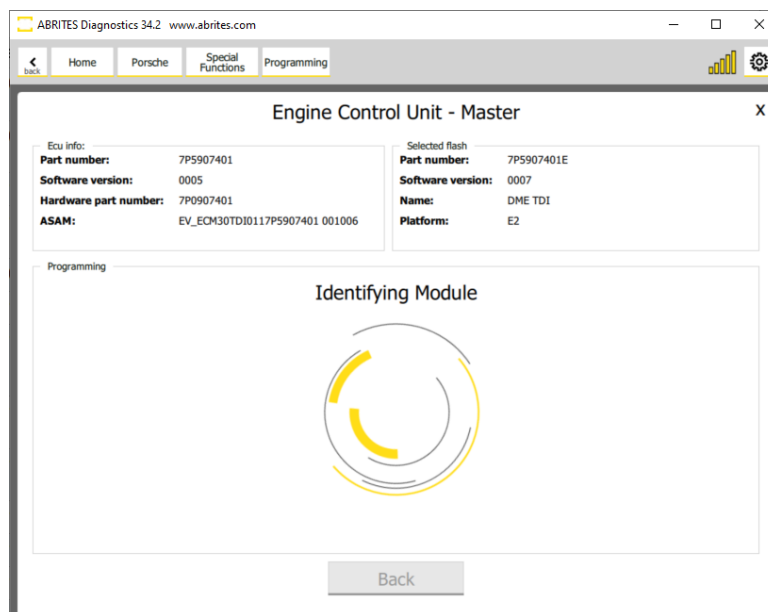


Once you have selected the unit and the appropriate version to start the process, you will see the screen with instructions and a large "START" button. To continue, you need to press and hold the START button. The software works as a guided function and is very intuitive to follow. If you are missing the required license you will get a message as in the second screenshot of this page.

IMPORTANT: "Please make sure the selected Flash is correct for the ECU, and that external power supply 13.6 V is provided"



The screen will visualise the status of the process, it shows information about each step of the process, and even it gives you estimation of the remaining time to complete. At the end you should see the message as in the second screenshot below - "Operation finished with success"



5. Read Component Security SID7

This special function lets you read the Component Security bytes of engine control units SID7. It is performed through the “Special Functions” menu and the dedicated “sdi7 Read CS” button and works by OBDII or bench.

